



JEEP® WRANGLER | 2007





LET

JEEP® WRANGLER

FREEDOM

WRANGLER UNLIMITED

REIGN

ANOTHER HERO – Built upon the shoulders of over 60 years of North American legend is every man’s hero: the all new 2007 Jeep® Wrangler. While honouring the legacy of its roots with supreme off-road performance, Wrangler found superb on-road capability. The wheel has come full circle. Today’s all new Wrangler benefits from improved ride and handling, added comfort and convenience, a quieter interior and advanced safety and security systems. Wrangler’s rugged, authentic and adventurous spirit is further enhanced with an all new four-door Wrangler Unlimited. With room for five, it is an altogether larger, more spacious Wrangler. Like those Jeep 4x4s before it, every Wrangler 4x4 is Trail Rated™, certifying its backcountry capabilities – where legends are born and adventures are found. The 2007 Wrangler takes up the mantle as the King of Off-Roading.



1946 Willys CJ-2A

- INTRODUCTION – 2
- CAPABILITY – 6
- COMPONENTS – 8
- CONVERTIBILITY – 10
- SAFETY & SECURITY – 12
- RUBICON & UNLIMITED RUBICON – 14
- SAHARA & UNLIMITED SAHARA – 16
- X & UNLIMITED X – 18
- SOUND & VISION – 20
- VERSATILITY – 22
- COLOUR & TRIM – 23
- SPECIFICATIONS – 24
- AUTHENTIC JEEP ACCESSORIES – 28



JEEP® WRANGLER UNLIMITED RUBICON SHOWN IN RED ROCK CRYSTAL PEARL

BETTERING THE BEST⁽¹⁾:

TOUGHER AXLES AND DRIVETRAIN

MORE GROUND CLEARANCE⁽²⁾

MORE AXLE ARTICULATION⁽¹⁾

MORE SAFETY FEATURES THAN EVER BEFORE

MORE TOP OPTIONS⁽²⁾

LARGER WHEELS AND TIRES ON ALL MODELS

IMPROVED AUDIO SYSTEMS

MORE HORSEPOWER AND TORQUE

IMPROVED FUEL EFFICIENCY

Wrangler was **OFF- AND ON-ROAD TESTED** 240,000 customer equivalent kilometres to ensure lasting durability.

TWO-SPEED ELECTRIC FAN with thermally activated circuit breaker aids engine cooling during severe off-road driving.

Wrangler's new **AIR DAM** is removable for better off-road clearance and provides a low-pressure area to aid cooling and streamline airflow around, rather than under, the vehicle.



Available **SWAY BAR DISCONNECT⁽⁴⁾** system allows each front wheel to react to its own forces and motion for maximum articulation.

An available three-piece **JEEP FREEDOM TOP™ MODULAR HARDTOP** offers more open-air options and greater protection from the elements.

A **FOLDING WINDSHIELD** offers an unobstructed view while on the trail.

A standard **SENTRY KEY™** anti-theft engine immobilizer provides additional security.

CARGO SPACE⁽³⁾ in Wrangler Unlimited has **NEARLY DOUBLED**.

Wrangler's **BODY-ON-FRAME** chassis design adds strength and durability.

Subjected to gruelling **CORROSION TESTS** simulating 10 years or 160,000 kilometres of real world use to ensure durability.

Full-framed and available half-framed⁽⁵⁾ **REMOVABLE DOORS** offer added open-air freedom along with map pockets for storage and armrests for added comfort.

FOUR-WHEEL BRAKE TRACTION CONTROL includes **FRONT AND REAR BRAKE LOCK DIFFERENTIALS** that can apply the brakes more aggressively and for longer duration when in 4WD 4LO mode.

SKID PLATES are standard on all models – including a 2.5-mm skid plate under the larger mid-mounted fuel tank for added undercarriage protection.

SOLID FRONT AND REAR AXLES feature **FILL AND DRAIN PLUGS** for easier servicing on the trail or in the shop.

⁽¹⁾Compared to 2006 TJ.

⁽²⁾BEST-IN-CLASS. Based on *Automotive News* 2006 Entry-Level Sport Utility segment.

⁽³⁾2007 Wrangler Unlimited compared to 2006 TJ Unlimited.

⁽⁴⁾Standard on Wrangler Rubicon; late available option on Wrangler Sahara and X.

⁽⁵⁾Late availability on Wrangler Unlimited.

THE SHORT AND LONG OF IT

wrangler

LET'S KEEP IT SHORT AND SWEET – The 21st-century icon of the Jeep® Brand just got badder. Wrangler is taller, stronger, tougher and more civilized, yet has the same voracious appetite for adventure.



wrangler unlimited

IT'S TIME TO GO LONG – As the first ever four-door Jeep Wrangler, Unlimited is longer, more comfortable and more capable⁽¹⁾ with room enough for five and then some.





JEEP® WRANGLER UNLIMITED RUBICON SHOWN IN BLACK



THE ALL NEW KING OF THE HILL



WRANGLER'S BEST ARTICULATION EVER

A flip of a switch in 4WD 4LO activates the available sway bar disconnect system¹¹ for jaw-dropping articulation.



MORE MUSCLE TO MOVE YOU

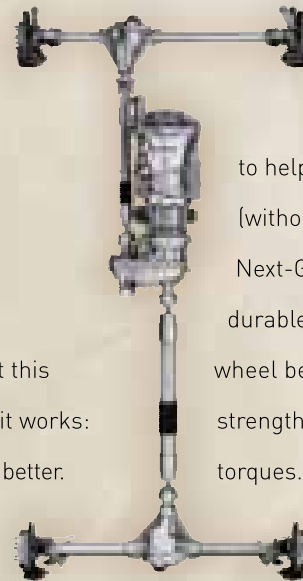
The new workhorse for all models is a 3.8L SMPI V6 engine that harnesses 202 hp and 237 lb-ft of torque.

¹¹Standard on Wrangler Rubicon. Late available option on Wrangler Sahara and X. Remember, the better part of valor is discretion. Do not attempt extreme trails without proper instruction and equipment.

The **QUINTESSENTIAL WRANGLER** – Over 60 years of testing in all corners of the world have culminated in the ultimate “go anywhere, do anything” freedom machine.



Uneasy lies the head that wears a crown. Not content to rest on our laurels, we test. To produce the greatest and strongest Wrangler ever, Jeep® engineers tirelessly torture-tested countless “mules” (prototype vehicles) on some of the toughest trails and most wicked environments known to mankind. Of course you’ve come to expect this from the legendary Jeep Brand. Here’s how it works: We beat it. It breaks. We make it stronger and better. Then we do it again. No company secrets here. It’s just our way of making a 4x4 that lives up to the world-renowned reputation of Jeep Wrangler. Only the strongest components survived.



Case in point: Rubicon’s Tru-Lok™ locking front and rear differentials feature electric solenoids mounted in the axles to help keep them safe from damage on the trail (without worrying about pressurized lines). The Next-Generation Dana 35 solid rear axle is more durable thanks to a larger pinion and unitized wheel bearings. The axle shafts have been strengthened to appropriately handle the higher torques. (They now use a larger 1250 series joint vs the previous 1310 joint). To increase structural stiffness and effectively double the sealing capability, the NV241 GII and NV241 O-R transfer cases now use 18 bolts (vs previous 9). Case closed.



HARD CORE GUTS JUST GOT TOUGHER

1. NEXT-GENERATION DANA 44 HEAVY-DUTY SOLID FRONT AXLE

— The driveshaft is mounted above-centre for improved ground clearance, greater gear strength and reduced driveshaft joint angles – for smooth and quiet operation. The housing is stiffer and stronger, and the pinion bearings are larger to handle added power requirements.

2. BEST-IN-CLASS GROUND CLEARANCE⁽¹⁾

— Rubicon's standard 32-inch BFGoodrich off-road tires have a custom tread pattern that is exclusive to the Jeep® Brand. The added tire height increases ground clearance by almost 25 mm (1 inch).

3. RUN SMOOTHLY ON THE EVEN ROAD

— Lower spring rates help provide awesome articulation and better on- and off-road ride.

4. HEAVY-DUTY SUSPENSION

— Solid axles with locating arms, coil springs, track/stabilizer bars, front steering damper and high-pressure gas-charged monotube shock absorbers provide comfortable capability.

5. BODY-ON-FRAME DESIGN

— The body-on-frame construction is fully boxed for added strength, stiffness and durability. Frame stiffness has been increased by 100% in bending and 50% in torsion.

6. KEEP STEERING ON COURSE

— Wrangler features a new steering linkage and a recirculating-ball steering gear. Its robust, cross-link geometry offers the stiffest possible linkage system in a solid-axle platform for improved steering precision and best-in-class turning diameter.⁽¹⁾

7. COMMAND-TRAC™

— A new NV241 GII transfer case is smoother, quieter and tougher than the previous NV231 transfer case. Added ribs and a stiffer outer case (that uses three pieces vs the previous five) also reduces the potential for leakage (standard on X and Sahara models).

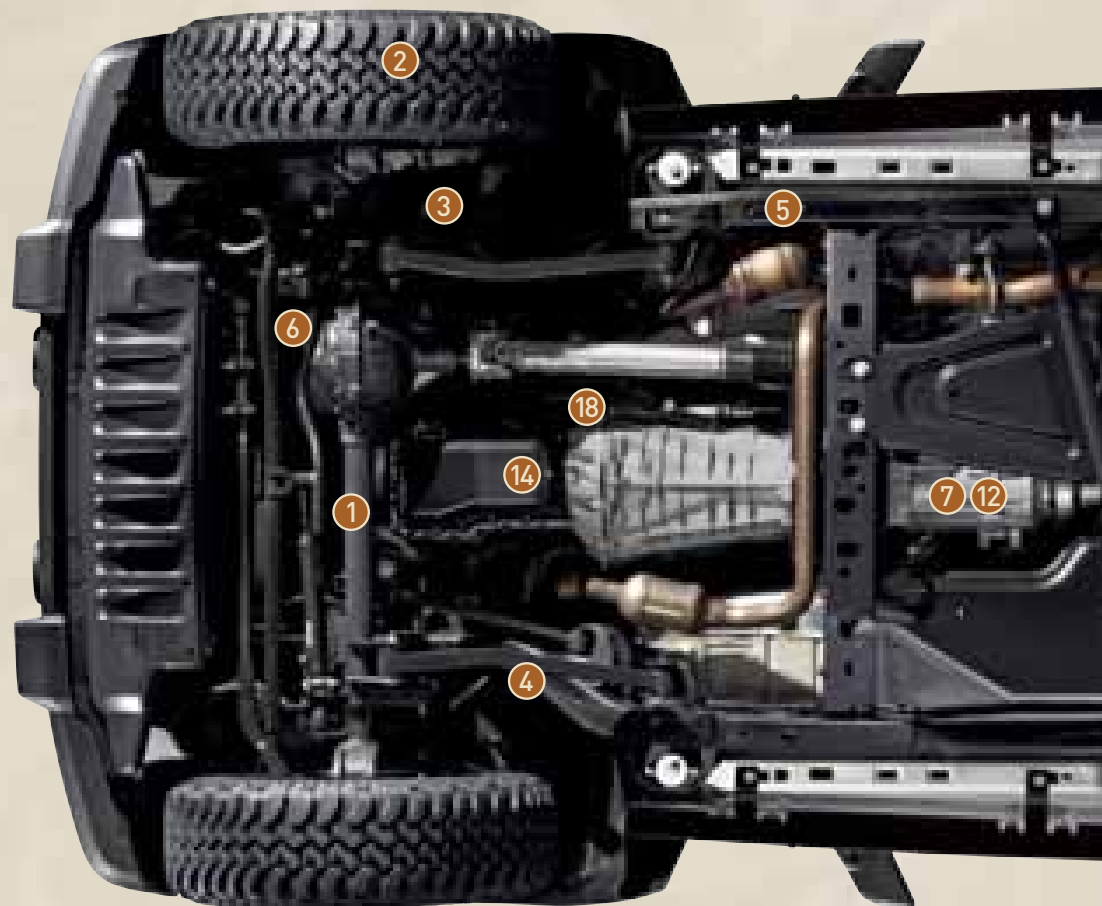
8. TUNABLE MONOTUBE SHOCK ABSORBERS

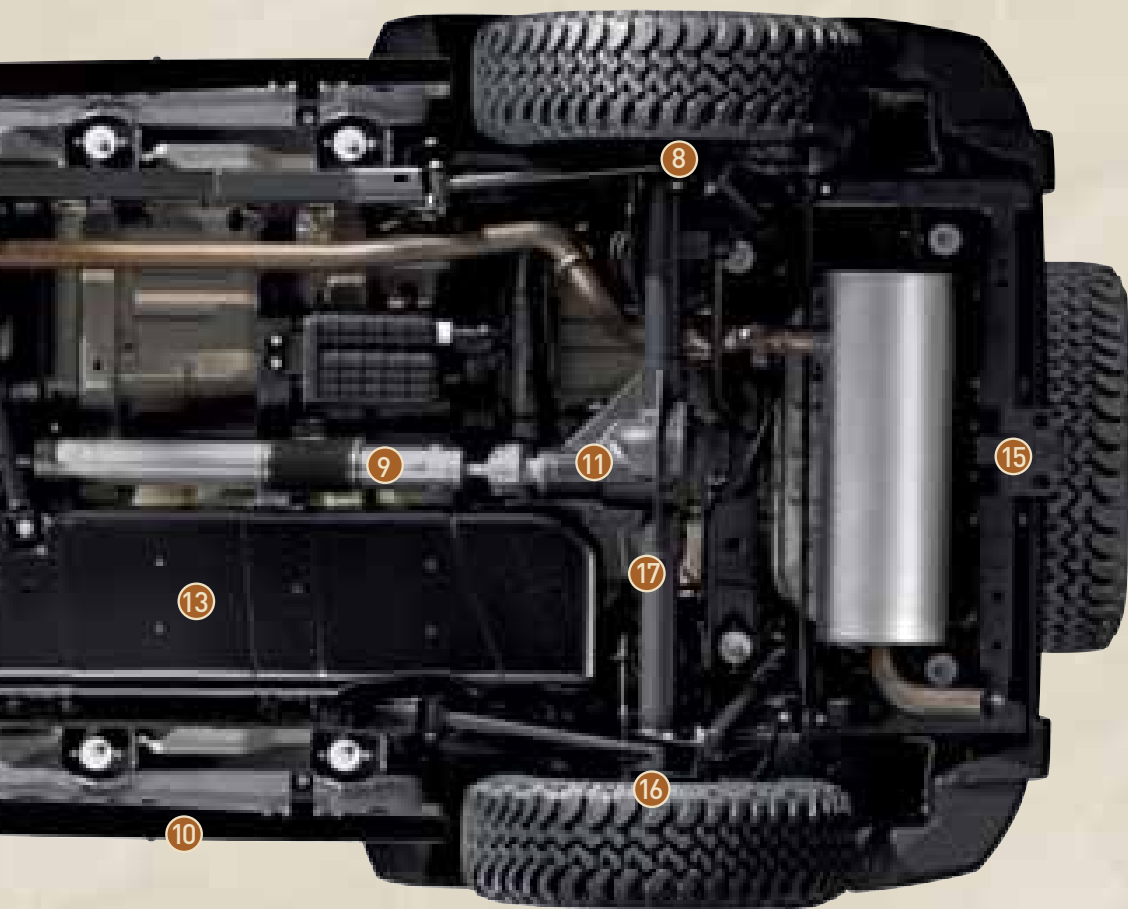
— A new proprietary Low-Speed Tunable (LST) valve technology is firm at low speeds for improved feel on the rocks and offers a more relaxed feel at higher speeds for optimum highway driving.

9. DRIVESHAFTS

— Shafts are quieter thanks to increased bending stiffness and precise balancing.

⁽¹⁾Based on *Automotive News* 2006 Entry-Level Sport Utility segment.





10. ROCK RAILS — Extra-tough, frame mounted rails provide real protection (standard on Rubicon).

11. TRU-LOK™ — Electronic-locking front and rear differentials balance speed between left and right wheels, maintaining forward momentum for the ultimate in Wrangler traction. The instrument panel mounted rocker switch can lock either the rear or both axles (standard on Rubicon).

12. ROCK-TRAC™ TRANSFER CASE — A 4:1 low-gear ratio allows Wrangler Rubicon to crawl at a lower speed for greater control and increases the amount of torque available at the wheels (standard on Rubicon).

13. SKID PLATES — Stamped steel skid plates for fuel tank, transfer case and automatic transmission oil pan help protect Wrangler's guts when battling boulders and jagged rocks (standard on all models).

14. TWO-PIECE STRUCTURAL OIL PAN — A two-piece oil pan provides a steel lower portion for impact resistance with an upper aluminum section for improved noise reduction and weight savings.

15. TORQUE TO TOW — Unlimited can confidently tow up to 1588 kg (3500 lb) when properly equipped with the factory-installed Trailer Tow Package.

16. OFF- AND ON-ROAD BRAKE SYSTEMS — A

four-wheel disc anti-lock brake system (ABS) with a Jeep® 4WD off-road calibration system provides more sustained wheel lockup on plowable surfaces like mud, sand and gravel than normal ABS for improved stopping performance (standard on all Wrangler models).



17. NEXT-GENERATION DANA 44 HEAVY-DUTY SOLID REAR AXLE — The Dana 44 solid rear axle has improved durability and articulation thanks to a heavier shaft, stiffer housing, larger pinion bearings and above-centre pinion mounting. The above-centre mounting helps reduce driveshaft joint angles for smoother, quieter operation and also adds extra ground clearance.

18. DRIVE-BY-WIRE — The new Electronic Throttle Control (ETC) system helps prevent the "pedal bobble" that often occurs when in 4WD 4LO. ETC's special off-road calibrations help the driver to "feather in" the throttle over uneven terrain, logs and rocks. The difference is night and day and is akin to walking vs bouncing along tough off-road events.



Jeep® Wrangler Unlimited Sahara shown with available factory-installed Trailer Tow Package.



THE SKY'S THE LIMIT

FRESH AIR – Original recipe to melt away a stressful day: choose any Wrangler, add your favourite tunes, pop the top, pour on the pedal and experience wind-in-your-hair freedom.

SPORT BAR WITH INTEGRATED SPEAKERS

The 6.5-inch speakers are a full inch larger than their predecessors. Of course, they are still fully weather-resistant.

POWER CONVENIENCE GROUP

Power windows, power door locks, remote keyless entry and a security alarm are now available with the removable full-framed doors in the Power Convenience Group. (Standard on Sahara)

MORE OPEN-AIR ADVENTURE

An all new, three-piece modular Jeep Freedom Top™ hardtop and innovative Sunrider™ soft top let you enjoy the great outdoors with a variety of open-air configurations.

FOLD-DOWN WINDSHIELD

It flips down⁽¹⁾ just like the original, but the windshield now pivots on a single hinge and is curved for better aerodynamics and reduced wind noise.



⁽¹⁾Be sure to follow all instructions in Owner's Manual for removal of top, doors and lowering of windshield. Driving with doors off and windshield down is for off-road use only. Properly secure all cargo.



HEAVENLY HARDTOP

Introducing the available Jeep Freedom Top™ three-piece modular hardtop that lets you air-dry your hair on the way to work. The hardtop allows for easier handling and storage by separating into three manageable pieces. Without the two front panels, the back of the hardtop is now much easier for two adults to remove. An available Authentic Jeep® Accessory by Mopar® Jeep Freedom Top Carrier and Storage Cover allows the panels to be conveniently carried in the vehicle or on the spare tire.



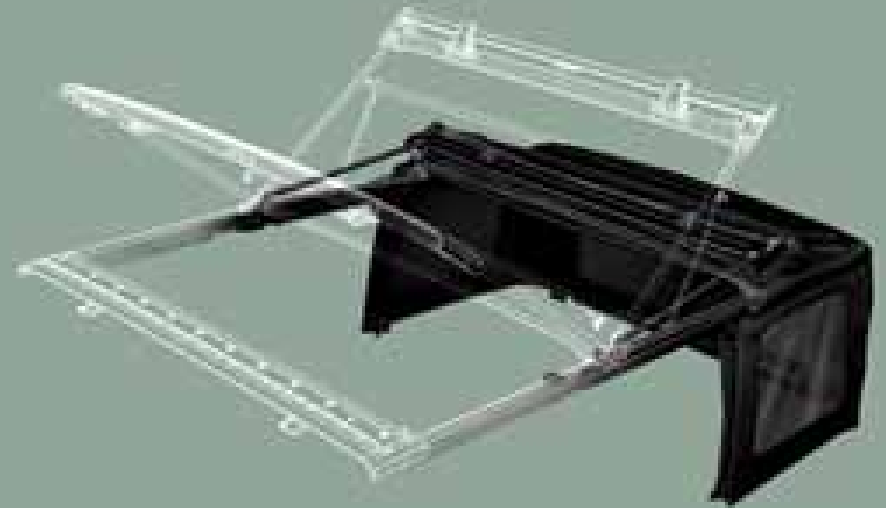
TAKE MORE GEAR – To bring more of your adventurous gear on your next trek, properly equip your Wrangler with an aftermarket roof rack cargo carrier.

FREE AND UNCONSTRAINED SOUL – For added adventure, there are up to 60 Wrangler two-door and 128 Wrangler four-door configurations available with the Sunrider Soft Top, Jeep Freedom Top three-piece modular hardtop, removable full and half doors⁽³⁾ and folding windshield. Best-in-class⁽⁴⁾ – by far.

⁽²⁾Late availability on Wrangler two-door.

⁽³⁾Late availability on Wrangler Unlimited.

⁽⁴⁾Based on *Automotive News* 2006 Entry-Level Sport Utility segment.



SUNSATONAL SOFT TOP

The Sunrider™ Soft Top⁽²⁾ lets you quickly get cover or let the sun shine in without having to fold back the entire top. The opening is huge: 139 x 76 cm (55 x 30 inches) in Wrangler and a massive 139 x 152 cm (55 x 60 inches) in Wrangler Unlimited which extends all the way over the rear occupants. All soft tops use a unique three-ply sailcloth fabric that helps to reflect road sounds, absorb wind noise, prevent buffeting and enhance overall insulation. The soft tops are easy to fold and tuck away as well. For added convenience, Authentic Jeep Accessories by Mopar offers a Window Storage Bag for the removable plastic windows. Choose the Dual Top Group for both a Jeep Freedom Top hardtop and soft top.





SAFETY AND SECURITY

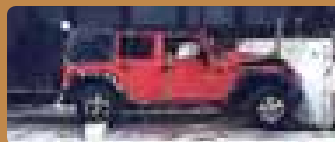
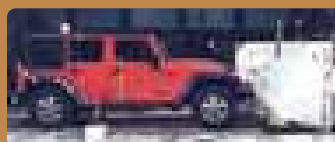
SECURITY STARTS FROM THE GROUND UP – The all new 2007 Jeep® Wrangler is a totally different animal in the safety department. The list of Wrangler’s safety and security features is as far-reaching as its capabilities.

- Electronic Stability Program (ESP™)⁽¹⁾ with Electronic Roll Mitigation (ERM), Traction Control and Hydraulic Brake Assist
- Body-on-frame construction
- Off-Road/On-Road four-wheel disc anti-lock brake system
- Off-Road/On-Road brake lock differentials
- Boxed frame is up to 100% stronger
- Larger brake rotors and brake master cylinder with separate hydraulic systems
- Wider track [+87 mm (3.4 in.)] for improved stability
- Energy absorbing steering wheel and column
- Pre-tensioners and load limiters on front seat belts
- Stronger sport bar design
- Off-road tested emergency brake system

The high-strength steel sport bar is integrated into the B-pillar and runs into the floor for improved side-impact performance, vehicle stiffness and **TORSIONAL RIGIDITY**. It also helps Wrangler feel more controlled at highway speeds.



The safety technology on the new Wrangler has been **CRASH TESTED** in multiple situations with sophisticated crash dummies. Wrangler has more safety and security features than ever.



The **MID-MOUNTED FUEL TANK** includes wide-spaced frame rails to cradle the fuel tank between the wheels for added protection. The move also frees up the rear for improved departure angles. Features a robust 2.5-mm skid plate for added protection during off-road activity.

The available **SEAT MOUNTED SIDE AIR BAGS⁽²⁾** deploy from the outboard side of each front cloth seat (N/A on vinyl) to enhance protection of the driver and front passenger in certain impacts. Each side air bag has its own impact sensor in order to autonomously trigger the air bag on the side where the impact occurs.

The **MID-MOUNTED FRONT PASSENGER AIR BAG⁽²⁾** offers optimized deployment for enhanced occupant protection.

The standard **ADVANCED MULTISTAGE FRONT AIR BAGS WITH OCS⁽³⁾** inflate with a force appropriate to the severity of the impact. The Occupant Classification System (OCS) measures the conditions for activation of the passenger side front air bag based upon the weight of the occupant.

NEW HALOGEN HEADLAMPS are 10 percent brighter on low beam and 20 percent brighter on high beam for improved down-road lighting performance at night.

ENERGY ABSORBING FRONT RAIL EXTENSIONS are crushable, hydroformed front rail tips that can be serviced after low-speed up to 13 km/h (8 mph) impact events.



ELECTRONIC STABILITY PROGRAM (ESP™)⁽¹⁾

ESP assists the driver in maintaining vehicle directional stability by applying selective braking and engine control so the vehicle will stay on the intended path. When the intended path does not agree with the actual course, ESP is activated. ESP helps on low-friction surfaces including wet, snowy, icy, sandy or gravel roads and also on hot, dry pavement where a thin layer of oil can form, causing the surface to be slick. Wrangler's ESP features three modes: Full-on is the default mode, partial-on mode shuts off traction control and full-off mode is ideal for negotiating off-road events.

TRACTION CONTROL

Traction control applies the brakes and in some cases closes the throttle to minimize wheel spin during acceleration. Traction control is tuned for on-road activity during normal operation, but reverts to brake lock differential operation during off-road driving.

ELECTRONIC ROLL MITIGATION (ERM)

ESP by itself helps minimize the chance of a rollover from highly dynamic manoeuvres, such as a sudden lane change at speed or radical handling of the vehicle. ERM is an algorithm in addition to ESP control that attempts to determine when a vehicle is in a potential rollover condition and applies selective braking to prevent wheel lift and help the driver regain vehicle control.

HYDRAULIC BRAKE ASSIST

Studies have shown that in an emergency the average driver will not apply the brakes hard enough or quick enough to achieve the minimum stopping distance. Hydraulic Brake Assist overcomes this tendency by using the ESP system to quickly apply the maximum available pressure to the brakes under panic stop conditions.

⁽¹⁾No system, no matter how sophisticated, can repeal the laws of physics or overcome careless driving actions. Performance is limited by available traction, which snow, ice and other conditions can affect. When the ESP warning lamp in the instrument cluster flashes, the driver needs to use less throttle and adapt speed and driving behaviour to prevailing road conditions. Always drive carefully, consistent with conditions. Please always wear your seat belt. ⁽²⁾Always use seat belts. Children 12 and under should always be in a back seat correctly using an infant or child restraint system, or the seat belt properly positioned, dependent on the child's age and weight. ⁽³⁾The passenger occupant classification system (OCS) determines the conditions for activation or deactivation of the passenger side front air bag based on the weight of the occupant. It may not activate the passenger air bag if the occupant has incorrect seating posture or is moving in the seat. Always observe the passenger air bag indicator light to determine if the OCS is deciding properly. Passengers should sit properly in the seat with the seat belt fastened at all times.



RADICAL ROCK CRAWLER

MOST POTENT – Rubicon is a hard core, turn-key 4x4 that has all the guts you need to go off-road. Far off-road. The new 2007 Rubicon is taller, tougher, stronger, stiffer, more capable and downright badder-to-the-bone.

The gnarliest, most capable off-road Jeep® 4x4 just got better. Beaucoup better. Rubicon's Tru-Lok™ front and rear locking differentials are now electronically activated for simplicity and have fewer parts for added reliability. The electronic sway bar disconnect is a new standard feature that puts the radical Rubicon in a class by itself. With the flip of a switch, Rubicon automatically disengages its front sway bar

when driving under 29 km/h (18 mph) in 4WD-low (4LO) mode. This allows the front wheels to drop and compress up to a monstrous 25% further than previous models (in Wrangler speak: that's huge!). Fresh out of the box, Wrangler Rubicon will smoke many hard core customized rigs. For colossal capability, choose Rubicon or Unlimited Rubicon.



THE DIE IS CAST. Two flanged front and rear output shafts mate with new constant velocity joints for smoother performance on any driving surface while adding strength to the already beefy NV241 O-R Rock-Trac™ two-speed transfer case.



THE NOBLE BEAST. Unlimited Rubicon's seating for five lets you take your friends (or family) to the rock quarries, trails and hills whose heads touch heaven; to places impossible to describe, where words fall short and pictures can't compare. Everyone deserves a Jeep® 4x4 mountaintop experience. Go Unlimited Rubicon.

RUBICON & UNLIMITED RUBICON

STANDARD: 3.8L SMPI V6 engine • Rock-Trac™ 4WD • Tru-Lok electronic front/rear locking differentials • Balanced Next-Generation Dana 44 heavy-duty solid front/rear axles • Sway bar disconnect system • High-pressure monotube shocks with Low-Speed Tunable valve technology • Easy-fold soft top • Air conditioning • Removable full-framed doors • Heavy-duty rock rails • 32-inch-tall BFGoodrich mud tires • 17-inch cast aluminum wheels • AM/FM stereo radio with CD player and auxiliary jack • Seven ∞Infinity™ speakers including subwoofer and 368-watt high-power amplifier • Full-length console with adjustable cup holders and locking storage bin/armrest • Front/rear tow hooks • Fog lamps • Cloth seats with YES Essentials™ seat fabric • Leather wrapped steering wheel with steering column mounted speed control

AVAILABLE: Front seat mounted side air bags • Jeep Freedom Top™ hardtop • Sunrider™ Soft Top^[1] (standard on Unlimited Rubicon) • MyGIG™ Multimedia Infotainment System^[2]

^[1]Late availability on Wrangler two-door.

^[2]Late availability.



JEEP® WRANGLER RUBICON SHOWN IN FLAME RED
WITH WARN® WINCH, SKID PLATE, SWAY BAR AND OFF-ROAD
BUMPER, AUTHENTIC JEEP ACCESSORIES BY MOPAR®.



CAPABILITY WITH CLASS

WEAVING DREAMS ON THE TRAILS OF THE WORLD – Sahara is for those who seek the best of both worlds. You want capability, but you also want comfort. You demand the complete open-top 4x4 experience but refuse to compromise your daily commute. Sahara turns such wishes into reality.

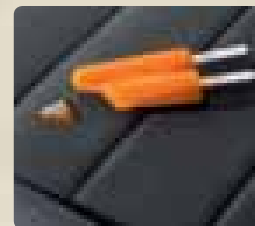
Jeep® Wrangler Sahara allows you to see, hear and do things that others can't – with a little bit more style. Sahara comes standard with features you want and need, including body colour fender flares, cloth seats with YES Essentials™ seat fabric, easy-access front passenger tip-and-slide seats (two-door), air conditioning, tubular side steps, Jeep Freedom Top™ hardtop, Power Convenience Group with

power locks, one-touch down power front windows, remote keyless entry system and security alarm, and ∞ Infinity™ Premium Sound System. Options include front seat mounted side air bags,⁽¹⁾ 18-inch cast aluminum wheels and Dual Top Group. When comfort and convenience are as important to you as capability – choose Sahara.



LEAVE NO TRACE.

Fear no mud pit, cranberry bog or off-road rut with the YES Essentials seat fabric on Sahara and Rubicon models. Its stain resistant, odour resistant, anti-static properties help it easily pass the chili-dog-with-extra-mustard-and-cheese-fries off-road test⁽¹⁾.



CRANK UP THE VIEW. Cloth seats now come standard with a four-way driver's seat adjuster. The front seats are sculpted to conform to the body and include a pump handle with a ratcheting mechanism that can raise the seat up almost 51 mm [2 inches].

SAHARA & UNLIMITED SAHARA

STANDARD: 3.8L SMPI V6 engine • Command-Trac™ 4WD • Balanced solid front/ rear axles • Five-link coil suspension • High-pressure monotube shocks with Low-Speed Tunable valve technology • Jeep Freedom Top™ hardtop • Air conditioning • Removable full-framed doors with roll-up windows • Body colour fender flares • Tubular side steps • Front/rear tow hooks • Fog lamps • Cloth seats with YES Essentials seat fabric • Leather wrapped steering wheel with steering column mounted speed control • Power windows • Power door locks with remote keyless entry • Security alarm • Sentry Key™ anti-theft engine immobilizer • 32-inch Goodyear Wrangler SR-A on-/off-road tires • 17-inch cast aluminum wheels • AM/FM stereo radio with CD player and auxiliary jack • Seven ∞ Infinity speakers including 368-watt high-power amplifier • Full length console with adjustable cup holders and locking storage bin/armrest

AVAILABLE: Front seat mounted side air bags⁽²⁾ • Sunrider™ Soft Top⁽³⁾ • Sway bar disconnect system⁽⁴⁾ • P255/70R18 on-/off-road tires with 18-inch cast aluminum wheels • MyGIG™ Multimedia Infotainment System⁽⁵⁾

⁽¹⁾Not compatible with aftermarket fabric protecting coatings.

⁽²⁾Always use seat belts. Children 12 and under should always be in a back seat correctly using an infant or child restraint system, or the seat belt properly positioned, dependent on the child's age and weight.

⁽³⁾Late availability on Wrangler two-door.

⁽⁴⁾Late available option on Wrangler Sahara and X.

⁽⁵⁾Late availability.



JEEP® WRANGLER UNLIMITED SAHARA
SHOWN IN RESCUE GREEN METALLIC



ADVENTUROUS BY NATURE

AN EXTENSION OF YOUR OWN PERSONALITY – Wrangler X is the trailhead of the Jeep® experience. The starting point for fun, freedom and the worldwide Jeep family. A 4x4 convertible with the perfect pedigree to match your personal purpose. Get to know yourself in Wrangler X.

Drive Wrangler X and you become part of a Jeep® community that lives to find a new kind of freedom. Like the freedom to explore our country's back roads and hidden hideaways. Or the option to leave the standard soft top down in a light rain storm (also works with the available Sunrider™ Soft Top⁽¹⁾ or new Jeep Freedom Top™ three-piece modular hardtop). Or the power to pass on the

freeway with a powerful 3.8L V6 engine. Or the confidence to know Wrangler X's standard Command-Trac™ four-wheel drive will go virtually anywhere you point it. Or the flexibility to plug and play your own MP3 tunes on the standard AM/FM stereo radio/CD player with auxiliary input. Choose X to set yourself free.



GO ANYWHERE. DO ANYTHING IN X. Confidently tow up to 907 kg (2000 lb) of adventurous gear with a properly equipped Wrangler X. Wrangler Unlimited X can tow a full 1588 kg (3500 lb) when properly equipped.

⁽¹⁾Late availability on Wrangler two-door. ⁽²⁾Fold-and-Tumble is two-door model only. Four-door has split folding rear seat. ⁽³⁾Late availability.

X & UNLIMITED X

STANDARD: 3.8L SMPI V6 engine • Command-Trac™ 4WD • Six-speed manual transmission • Balanced solid front and rear axles • Five-link coil suspension • High-pressure monotube shocks with Low-Speed Tunable valve technology • Easy-fold soft top • Removable full-framed doors with roll-up windows • Moulded-in colour (Black) fender flares • Removable air dam • Wash-out interior with drain plugs • Fold-down windshield • All speed traction control • Four-wheel anti-lock disc brakes • ESP with Electronic Roll Mitigation • Halogen headlamps • Sentry Key™ anti-theft engine immobilizer • Rear storage bin • Goodyear on-/off-road tires • 16-inch styled steel wheels • AM/FM stereo radio with CD player and auxiliary jack • Fold-and-Tumble™ rear seat⁽²⁾

STANDARD ON UNLIMITED X: Full length floor console • Cloth seats • Leather wrapped steering wheel with steering column mounted Speed Control • Sunrider™ Soft Top • Fog lamps and tow hooks • Deep tint glass • 16-inch cast aluminum wheels

AVAILABLE: Air conditioning • Four-speed automatic transmission • Removable half-framed doors • Jeep Freedom Top™ hardtop • Dual Top Group • Floor mats • Seven ∞ Infinity™ speakers including 368-watt high-power amplifier • Trailer Tow Group • SIRIUS™ Satellite Radio⁽³⁾



JEEP® WRANGLER UNLIMITED X SHOWN IN BRIGHT SILVER METALLIC



THESE SYSTEMS ROCK

CRANK UP THE VOLUME – Wrangler owners expect extreme capability, both on the rock and in their audio systems. We delivered for discrete high-fidelity sound. We upgraded every facet of the new Wrangler's audio systems for improved audio pleasure.

Wrangler's sound system had a major overhaul, including better speaker designs, improved mountings and new speaker positions for optimum frequency response and accurate sound reproduction. New Technology Generation 4 (NTG4) radios with MPS and MP3 audio input jacks and six-speaker audio system are standard on all models. There are now two strategically placed .75-inch weather-resistant tombstone tweeters and four 6.5-inch speakers (two in the front instrument panel and two in the overhead sound bar). The two tombstone tweeters are mounted to the outboard

ends of the instrument panel for better directional sound. The enclosures for the instrument panel mounted speakers are 4x larger and 2x larger for the subwoofer (vs 2006) and help provide a full, rich sound. Available on all models is a premium sound system that includes six ∞ Infinity™ speakers and 8-inch subwoofer with 368-watt high-power amplifier. The eight-channel subwoofer provides six more channels than before with double the power on those amplified channels to address customer requirements for discrete power and crystal clear sound.



The premium sound systems subwoofer was relocated to the rear compartment to allow for a larger locking console. The front speaker system is bi-amplified with electronic crossovers in the amplifier that channel low and mid-range frequencies to the 6.5-inch speakers and low frequencies to the subwoofer. High frequencies are channeled through the instrument panel mounted tweeters.



NEW MULTIMEDIA SYSTEM. The available MyGIG™ Multimedia Infotainment System⁽¹⁾ includes a 20GB Hard Disc Drive (HDD), and full-map touch screen navigation⁽²⁾. All GPS navigation data is stored on the HDD (external discs are not necessary). Store your favourite media files on the HDD via CD or a USB 2.0 port, and manage/retrieve your tunes with the Gracenote digital jukebox. You can also listen to AM/FM/CD/SIRIUS™ stations or use the handy "bread crumb" navigation feature on your next Jeep® Jamboree. It also has the ability to program geographic locations by latitude and longitude, as well as select and store geographical points in the NAV computer.



The 6.5-inch display with touch screen panel is great for DVD viewing (watch your favourite DVD in Park) thanks to its 65,000 colours.

⁽¹⁾Late availability.

⁽²⁾Navigation system operates only in certain metropolitan areas. See your retailer for details.



JEEP® WRANGLER RUBICON CLOTH INTERIOR SHOWN IN MEDIUM KHAKI



FIVE-PASSENGER SEATING. Unlimited has room for five with an almost 320-mm (12.6-inch) longer wheelbase than the 2006 Unlimited [523 mm (20.6 inches) longer than 2007 Wrangler 2-door]]. Its 86-mm (3.4-inch) wider front track (than 2006 TJ) provides a more comfortable ride, improved stability and a more spacious interior for versatility and added cargo capacity.⁽¹⁾

CAPABLE AND QUIET CARPET. All models feature removable Dune 10-oz carpet with sound barrier and sound absorber backings for additional noise insulation. The six-piece Dark Slate Grey floor carpets are easier to remove and feature floor mat retention hooks on both front carpets. Front floor mats are optional on Wrangler. Front and rear mats are optional on Unlimited.



Above: Fold-and-Tumble™ rear seat with new retractable head restraints is standard on two-door Wranglers.

Upper right: Four-door Wranglers come standard with split folding rear seats. **At right:** Wash-out interior with drain plugs and carpet removed. **Far right:** Hold and hide your precious what-not (or trail mix that you don't want to share) in the new secured storage bin beneath Wrangler's rear floor. The clever storage bin is only accessible when the lockable rear swing gate is opened.

⁽¹⁾Properly secure all cargo.





⁽¹⁾Not available on Wrangler Sahara and Wrangler Unlimited Sahara.
 Note: Due to occasional printing irregularities, the colours shown may vary slightly from actual hues.



Vinyl, Two-Tone shown in Medium Slate Grey, also available in Medium Khaki
 Standard on Wrangler X



Cloth, Two-Tone shown in Medium Slate Grey, also available in Medium Khaki
 Optional on Wrangler X, Standard on Wrangler Unlimited X



Premium Cloth with YES Essentials™ seat fabric inserts, Two-Tone shown in Medium Slate Grey, also available in Medium Khaki
 Standard on Wrangler Sahara, Wrangler Unlimited Sahara, Wrangler Rubicon and Wrangler Unlimited Rubicon



16-inch Styled Steel painted Argent
 Standard on Wrangler X



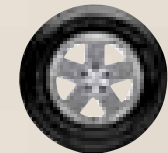
16-inch Cast Aluminum painted Sparkle Silver
 Optional on Wrangler X, Standard on Wrangler Unlimited X



17-inch Cast Aluminum painted Sparkle Silver
 Standard on Wrangler Sahara and Wrangler Unlimited Sahara
 Optional on Wrangler X and Wrangler Unlimited X



17-inch Cast Aluminum with Machined Face
 Standard on Wrangler Rubicon and Wrangler Unlimited Rubicon



18-inch Cast Aluminum painted Sparkle Silver
 Optional on Wrangler Sahara and Wrangler Unlimited Sahara



Soft Top – Standard on Wrangler is a sailcloth soft top in Black or Dark Khaki⁽²⁾
 Utilizes a special three-ply material that is quiet, watertight and easy to fold and tuck away. Standard on Wrangler Unlimited and available on Wrangler is the exclusive Sunrider™ Soft Top.⁽³⁾



Half-Framed Doors⁽⁴⁾
 Half-framed doors are removable⁽⁵⁾ and feature manual locks. Within seconds you can remove the door completely for the ultimate in open-air freedom. Available on all models.



Jeep Freedom Top™ Hardtop – Available on Wrangler & Wrangler Unlimited (not shown) in Black or Dark Khaki⁽²⁾
 Strong and secure hardtop that offers solid protection from the elements and helps quiet your ride. Enjoy the best of both hardtop and soft-top worlds when you choose the Dual Top Group.



Full-Framed Doors
 Full-framed doors are removable⁽⁵⁾ and have roll-up windows with available power windows and door locks. Map pockets with open slots along the lower edges ensure wash-out capability. Aluminum forged hinges are used on both Wrangler and Wrangler Unlimited. Standard on all models.

⁽²⁾Dark Khaki top colour is only available on Sahara models in Red Rock Crystal Pearl, Jeep® Green Metallic and Black. ⁽³⁾Late availability on Wrangler two-door. ⁽⁴⁾Late availability on Wrangler Unlimited four-door; requires side air bags on Wrangler two-door. ⁽⁵⁾Be sure to follow all instructions in Owner's Manual for removal of top, doors and lowering of windshield. Driving with doors off and windshield down is for off-road use only.

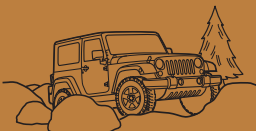


FOUR-WHEEL DRIVE MASTERY AND LEADERSHIP – It has always been at the core of the Jeep® Brand. A Jeep Trail Rated™ badge is found on all 4x4s that pass a series of gruelling tests designed to prove off-road capability on the world's most demanding terrain.



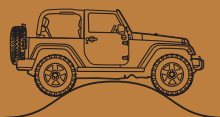
Max. RTI Rating:
2-door: 822
4-door: 644

ARTICULATION – Articulation is a fancy term that relates to a vehicle's suspension and frame flexibility. Good flexibility helps the tires maintain contact with the ground even on uneven terrain. Articulation is measured by driving one tire up a 20-degree ramp and stopping when a tire begins to lift off of the ground. The distance up the ramp helps determine its Ramp Travel Index (RTI) rating. Generally speaking, a vehicle's RTI rating is directly correlated to its overall capability on the trail.



Approach Angle: 44.3/44.4 degrees
Departure Angle: 40.4/40.5 degrees

MANOEVRABILITY – For predictable navigation around emergency situations, like trees or large boulders that are close together. Includes subjective evaluations that range from exterior damage potential to mirrors while going through narrow gaps to cosmetic damage to sills under the body. The 2007 Jeep Wrangler (2-door) has best-in-class turning diameter,⁽¹⁾ shortest length⁽¹⁾ and wheelbase.⁽¹⁾ Wrangler Rubicon (2-door) has best-in-class manoeuvrability.⁽¹⁾



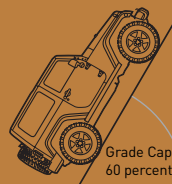
Breakover Angle: 2-door: 25.3 degrees
4-door: 20.8 degrees

GROUND CLEARANCE – For ability to drive over obstacles, logs or whatever else happens to be blocking your path to the backwoods. Includes approach, departure and breakover angles. The 2007 Jeep Wrangler and Wrangler Unlimited have best-in-class ground clearance,⁽¹⁾ approach⁽¹⁾ and departure angles.⁽¹⁾

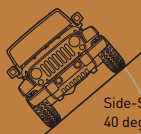


Water Fording: 762 mm [30 inches]

WATER FORDING – For crossing streams and flooded underpasses. Measures the ability to cross a specific depth of water at a specified speed. The speed decreases as the depth increases. The 2007 Jeep Wrangler and Wrangler Unlimited have tremendous water fording capability (762 mm [30 inches] when under 8 km/h [5 mph]). A word or two about your Wrangler and water: Do not attempt water fording unless depth is known to be less than 762 mm (30 inches). Traversing water can cause damage that may not be covered by the new vehicle warranty. Always off-road responsibly in approved areas.



Grade Capability:
60 percent



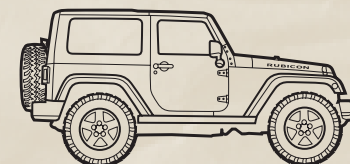
Side-Slope Angle:
40 degrees

TRACTION – For the ability to climb slopes that only mountain goats would dare attempt. Testing includes tire traction on untamed, slippery roads (wet, mud, snow) and on steep grades. The 2007 Jeep Wrangler and Wrangler Unlimited have the most traction of any Wrangler – ever.

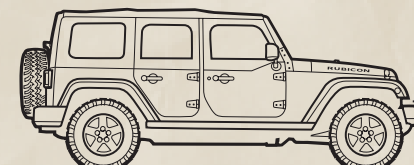
DIMENSIONS



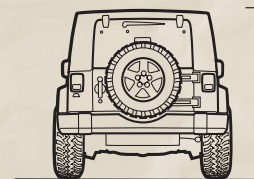
2-door: 1872 mm [73.7 in.]
4-door: 1877 mm [73.9 in.]



4161 mm [163.8 in.]



4684 mm [184.4 in.]



2-door: 1839 mm [72.4 in.]
4-door: 1836 mm [72.3 in.]

⁽¹⁾Based on Automotive News 2006 Entry-Level Sport Utility segment.

NOTE: Wrangler Rubicon specifications shown.

POWERTRAIN

Engine	3.8L SMPI V6
Displacement (cu. in.)	230.5
Net Power kW (hp) @ rpm	151 [202] @ 5000
Net Torque N-m (lb-ft) @ rpm	321 [237] @ 4000
Fuel System	Sequential multi-port, electronic fuel injection
Fuel Recommendation	Unleaded regular, 87 octane (R+M)/2
Transmission	
6-speed manual with overdrive, synchronized in all forward gears and reverse, multi-rail shift system with top-mounted shift lever	Std.
4-speed automatic with overdrive clutch hydraulic actuation, dual-mass flywheel system (includes off-road skid plate), electronic governor, electronically controlled converter clutch	Opt.
Axle Ratio	3.21 Std., 4.10 Opt. (Std. – Rubicon)
Overall Top Gear	2.69 Std., 3.44 Opt. (Std. – Rubicon)
Construction	Cast iron block, aluminum alloy heads
Electronic Throttle Control	Std.
Valve System	OHV, 12 valves, roller camshaft followers, hydraulic lifters
Mounts	Cast iron mounting brackets with tuned 3-point dual preloaded elastomeric bushings
Exhaust System	Long-life, stainless steel

ELECTRICAL SYSTEM

Alternator	160A
Battery	600 CCA, maintenance free
Fan	On-demand, 2-speed electric with thermally activated circuit breaker

FOUR-WHEEL-DRIVE SYSTEM (transfer case)

NV241 GII Command-Trac™ (includes off-road skid plate), part-time, 2-speed, with shift-on-the-fly, 2.72:1 low-gear ratio	Std. – All models, except Rubicon
NV241 OR Rock-Trac™ (includes off-road skid plate), part-time, 2-speed, with shift-on-the-fly, 4.0:1 low-gear ratio	Std. – Rubicon

GEAR RATIO/CRAWL RATIO (manual transmission)

Model Ratio	First Gear Ratio	Transfer Case (4LO)	Axle Ratio	Crawl
Rubicon	4.46	4.00	4.10	73.1
Unlimited Rubicon	4.46	4.00	4.10	73.1
Sahara	4.46	2.72	3.21	38.9
Unlimited Sahara	4.46	2.72	3.21	38.9
X	4.46	2.72	3.21	38.9
Unlimited X	4.46	2.72	3.21	38.9

CAPACITIES/WEIGHTS/TOWING⁽¹⁾ kilograms (pounds) unless otherwise specified

Mid-Mounted Fuel Tank (includes off-road skid plate) litres (imp. gal.) 2-door/4-door	70 (15.5)/80 (17.5)
Base Curb Weight – 2-door	1715 (3782)
– 4-door	1972 (4347)
Payload Capacity (includes occupants and cargo)	454 (1000)
Maximum Gross Combined Weight Rating (when properly equipped) 2-door/4-door, class II towing ⁽²⁾	3402 (7500)/4173 (9200)
Maximum Loaded Trailer Weight (when properly equipped) – 2-door/4-door	Std. – 454 (1000)
– 2-door with Trailer Tow Group/4-door with Trailer Tow Group	Opt. – 907 (2000)/1588 (3500)
Tongue Load Limit	159 (350)

RAMP TRAVEL INDEX (RTI) [20-degree ramp]

Rubicon (sway bar connected/disconnected)	638/822
Unlimited Rubicon (active sway bar connected/disconnected)	484/644

CARGO VOLUME litres (cubic feet)

Rear Seat – folded and tumbled, 2-door	1733 (61.2)
– folded, 2-door/4-door	1600 (56.5)/2322 (82.0)
Behind Rear Seat – 2-door/4-door	487 (17.2)/1314 (46.4)

BODY/SUSPENSION/CHASSIS

Body Design	Boxed steel frame with crushable, hydroformed front rail tips
Suspension	Live solid axles, 5-link front/rear, coil springs, leading arms, track/stabilizer bars and front steering damper
Shock Absorbers (gas-charged)	High-pressure monotube with Low-Speed Tunable valve technology
Front Sway Bar Disconnect System	Opt. (Std. – Rubicon)
Steering Type	Power, recirculating ball with damper
Overall Ratio – 2-door/4-door	16.7:1/14.7:1
Turning Diameter (curb-to-curb, with P225/75R16 tires) – m (ft) 2-door/4-door	10.6 (34.9)/12.6 (41.2)
Steering Turns (lock-to-lock) – 2-door/4-door	3.5/3.1

BRAKE SYSTEM

Four-Wheel Disc	Hydraulic, power assisted, 11.9" vented front/12.4" solid rear
Electronic Stability Program	Four-wheel disc anti-lock, with on- and off-road calibrations, 4-channel, active wheel speed, vehicle speed, steering wheel angle, yaw rate and lateral acceleration sensors, vehicle stability management with 3-stage activation switch, all speed traction control, Brake Assist, Electronic Roll Mitigation and Electronic Brake Distribution
Parking Brake Type	Drum-in-hat, off-road rated

INTERIOR DIMENSIONS millimetres (inches) unless otherwise specified

Seating Capacity – 2-door front/rear, 4-door front/rear	2/2, 2/3
Headroom – front	1049 (41.3)
– rear 2-door/4-door	1024 (40.3)/1024 (40.3)
Legroom – front	1041 (41.0)
– rear, 2-door/4-door	904 (35.6)/945 (37.2)
Shoulder Room – front	1417 (55.8)
– rear 2-door/4-door	1565 (61.6)/1443 (56.8)
Hip Room – front	1412 (55.6)
– rear, 2-door/4-door	1135 (44.7)/1440 (56.7)
Front Seat Travel	239 (9.4)
Front Seat Volume Index – litres (cubic feet)	1552 (54.8)
Rear Seat Volume Index – litres (cubic feet), 2-door/4-door	1368 (48.3)/1371 (48.4)
Cargo Liftover Height – 2-door/4-door	706 (27.8)/798 (31.4)

EXTERIOR DIMENSIONS millimetres (inches)

Wheelbase – 2-door/4-door	2423 (95.4)/2946 (116.0)
Track – front/rear	1572 (61.9)/1572 (61.9)
Overhang – front/rear	719 (28.3)/996 (39.2)

Command-Trac, Rock-Trac, MyGIG, Sentry Key, Tru-Lok, EVS and Jeep Freedom Top are trademarks of DaimlerChrysler Corporation. Trail Rated and the Trail Rated logo are trademarks of DaimlerChrysler Corporation. ESP is a trademark of DaimlerChrysler AG. Mopar, Trail Guide and EVS II are registered trademarks of DaimlerChrysler Corporation. Fold-and-Tumble is a trademark of Intier Automotive Inc. Infinity is a trademark of Harman International Industries, Inc. Trac-Lok is a registered trademark of Dana Corporation. Sunrider is a trademark of Bestop, Inc. YES Essentials is a trademark of Milliken & Company. SIRIUS is a trademark of SIRIUS Satellite Radio Inc. Warn is a registered trademark of Warn Industries, Inc. iPod and the iPod design are registered trademarks of Apple Computers, Inc.

⁽¹⁾Be sure to follow all instructions in Owner's Manual for trailer towing. For specific details, discuss your plans with your Jeep® dealer, who will help you select the right equipment to meet your specifications. ⁽²⁾Factory-installed Class II trailer hitch bolts directly to the frame's rear crossmember. If trailer hitch is ordered along with tow hooks, the hitch will replace the rear tow hook.

	2-DOOR			4-DOOR			
	X		SAHARA	RUBICON	UNLIMITED X	UNLIMITED SAHARA	UNLIMITED RUBICON
	B	S	G	R	S	G	R
CAPABILITY							
Axle – Next-Generation Dana 35 solid rear (included with automatic transmission)	P	P	P				
– Next-Generation Dana 44 heavy-duty solid rear (included with manual transmission)	P	P	P	•	•	•	•
– Next-Generation Dana 44 heavy-duty solid front				•		•	
Axle Ratio – 3.21:1	•	•	•	•	•		
– 4.10:1 (included with Trailer Tow Group or 4-speed automatic transmission)	0/P	0/P	0/P	•	0/P	0/P	•
Differentials – Trac-Lok® limited-slip rear (requires Dana 44 heavy-duty solid rear axle)		0	0		0	0	
– Tru-Lok™ rear, electronic remote locking ⁽¹⁾	0	0	0		0	0	
– Tru-Lok front and rear, electronic remote locking				•			•
– Brake lock, front and rear, off-road/on-road	•	•	•	•	•	•	•
Four-Wheel-Drive System – Command-Trac™ NV241 GI, manual, part-time, shift-on-the-fly transfer case	•	•	•		•	•	
– Rock-Trac™ NV241 O-R, manual, part-time, shift-on-the-fly transfer case				•			•
Powertrain – 3.8L V6 SMPI engine with 6-speed manual transmission	•	•	•	•	•	•	•
– 3.8L V6 SMPI engine with 4-speed automatic transmission	0	0	0	0	0	0	0
Rock Rails – Black, painted steel, heavy-duty, protective, frame mounted				•			•
Skid Plates – Protective; fuel tank (2.5-mm), transfer case (3.5-mm), 4-speed automatic transmission (4-mm) (if equipped)	•	•	•	•	•	•	•
Sway Bar Disconnect ⁽¹⁾ – Electronically controlled, front (requires Tru-Lok rear differential)		0	0	•	0	0	•
Tow Hooks – Two front, one rear		•	•	•	•	•	•
Trailer Tow Group – Includes Class II receiver hitch, 4-pin adapter, Dana 44 heavy-duty solid rear axle and 4.10:1 axle ratio (deletes rear tow hook, if equipped)		0	0	0	0	0	0
EXTERIOR							
Air Dam – Removable, front	•	•	•	•	•	•	•
Doors – Removable half-framed doors ⁽²⁾ with soft-top style zip-out windows (requires soft top)	0	0	0	0	0	0	0
– Removable full-framed doors with lightly tinted roll-up windows	•	•	•	•	•	•	•
Fender Flares – Black, moulded-in colour	•	•		•	•	•	•
– Body colour, moulded-in colour			•		•		
Fuel Cap – Locking	0	0	0	0	0	0	0
Grille – Body colour, painted thermal plastic olefin polymer, stone and dent resistant, easy removal for service (only tool required is a dime)	•	•	•	•	•	•	•
Lamps – Halogen headlamps (9008 bulb), polycarbonate clear lens; impact resistant	•	•	•	•	•	•	•
– Two halogen fog lamps, located in front bumper		•	•	•	•	•	•
Side Steps – Blow-moulded, two-piece Emma-bond (electromagnetically bonded upper and lower pieces by magnetic resonance withstands stone pecking and will not corrode), textured diamond plate surface pattern, tubular	0	0	•		0	•	
Tires – P225/75R16 Goodyear Wrangler ST, black sidewall, on-/off-road	•						
– P245/75R16 Goodyear Wrangler SR-A, black sidewall, on-/off-road		•			•		
– P255/75R17 Goodyear Wrangler SR-A, outline white letter (OWL), on-/off-road (included with 17" cast aluminum wheels)		P	•		P	•	
– P255/70R18 Bridgestone Dueler A/T RH-S, OWL, on-/off-road (requires 18" wheels)			0			0	
– LT255/75R17 BFGoodrich Mud Terrain, black sidewall, off-road				•			•
Tops – Soft top; easy-folding; three-ply sailcloth	•	•		•			
– Sunrider™ Soft Top ⁽³⁾ with sunroof feature; three-ply sailcloth	0	0		0	•		•
– Jeep Freedom Top™ three-piece modular hardtop with rear wiper/washer and rear defroster, full-framed doors and deep tinted glass; fiberglass		0	•	0	0	•	0
– Dual Top Group with Jeep Freedom Top hardtop and Sunrider Soft Top ⁽³⁾ in same colour with full-framed doors and deep tinted glass		0	0	0	0	0	0
INTERIOR							
Air Conditioning – Manual temperature controls	0	0	•	•	0	•	•
Console – Mini floor with front and rear cup holders and cubby bin	•						

	2-DOOR			4-DOOR			
	X		SAHARA	RUBICON	UNLIMITED X	UNLIMITED SAHARA	UNLIMITED RUBICON
	B	S	G	R	S	G	R
- Floor with front and rear cup holders, locking storage bin and armrest (included with automatic transmission)	P	•	•	•	•	•	•
Floor Mats – Front	0	0	0	0			
- Front and rear					0	0	0
Gauges – Compass, temperature and mini trip display (includes average fuel economy, distance to empty or elapsed time)		•	•	•	•	•	•
Lamps – Courtesy, driver's side		•	•	•	•	•	•
- Dome, rear with on/off switch					•	•	•
Power Convenience Group – Power locks, power windows with front one-touch down operation, remote keyless entry system and security alarm (requires full-framed doors)		0	•	0	0	•	0
Radio – AM/FM stereo with CD player and auxiliary jack	•	•	•	•	•	•	•
- AM/FM stereo with 6-disc CD/DVD changer and auxiliary jack		0	0	0	0	0	0
- MyGIG™ Multimedia Infotainment System ⁽⁴⁾ with AM/FM stereo, CD/DVD, 20GB Hard Disc Drive (HDD) GPS navigation, auxiliary jack, USB port, 6.5" touch TFT screen with 65,000 colours (DVD viewing in Park), SIRIUS™ Satellite Radio, dual FM tuner, Gracenote digital music jukebox and media storage			0	0		0	0
Seating, Fabric – Vinyl	•						
- Cloth		•			•		
- YES Essentials™ seat fabric ⁽⁵⁾			•	•		•	•
Seats, Front – 4-way manual height adjuster; driver's		•	•	•	•	•	•
- Easy-access tip and slide; passenger		•	•	•			
Rear – Fold-and-Tumble™ seatback		•	•	•			
- Split folding 60/40					•	•	•
SIRIUS Satellite Radio⁽⁴⁾ (includes first year of service) (included with MyGIG Multimedia Infotainment System ⁽⁴⁾)		0	0/P	0/P	0	0/P	0/P
Smoker's Group – Removable ashtray and lighter element	0	0	0	0	0	0	0
Sound System – Six speakers	•	•			•		
- Seven ∞ Infinity™ speakers including subwoofer and 368-watt high-power amplifier		0	•	•	0	•	•
Steering Wheel – Leather wrapped with speed controls		•	•	•	•	•	•
SAFETY AND SECURITY							
Air Bags⁽⁶⁾ – Advanced multistage driver and front passenger with Occupant Classification System ⁽⁷⁾ (OCS)	•	•	•	•	•	•	•
- Side front seat mounted		0	0	0	0	0	0
Brakes – 4-wheel disc anti-lock with on-/off-road calibration	•	•	•	•	•	•	•
Electronic Stability Program (ESP)⁽⁸⁾ – Includes Brake Assist, all speed traction control, Electronic Roll Mitigation and on-/off-road brake lock differentials	•	•	•	•	•	•	•
Sentry Key™ – Anti-theft engine immobilizer	•	•	•	•	•	•	•

• – Included P – Available within package noted 0 – Optional

⁽¹⁾Late availability on Wrangler Sahara and X models. ⁽²⁾Late availability on Wrangler Unlimited. ⁽³⁾Late availability on Wrangler two-door. ⁽⁴⁾Late availability. ⁽⁵⁾Not compatible with aftermarket fabric protecting coatings. ⁽⁶⁾Always use seat belts. Children 12 and under should always be in a back seat correctly using an infant or child restraint system, or the seat belt properly positioned, dependent on the child's age and weight. ⁽⁷⁾The passenger occupant classification system (OCS) determines the conditions for activation or deactivation of the passenger side front air bag based on the weight of the occupant. It may not activate the passenger air bag if the occupant has incorrect seating posture or is moving in the seat. Always observe the passenger air bag indicator light to determine if the OCS is deciding properly. Passengers should sit properly in the seat with the seat belt fastened at all times. ⁽⁸⁾No system, no matter how sophisticated, can repeal the laws of physics or overcome careless driving actions. Performance is limited by available traction, which snow, ice and other conditions can affect. When the ESP warning lamp in the instrument cluster flashes, the driver needs to use less throttle and adapt speed and driving behaviour to prevailing road conditions. Always drive carefully, consistent with conditions. Please always wear your seat belt.

ABOUT THIS CATALOGUE: Since the time of printing, some of this information may have been updated. Ask your retailer for details before ordering.

Specifications, descriptions and illustrations contained in this catalogue are based on information believed to correct at the time this publication was approved for printing. However, accuracy cannot be guaranteed. DaimlerChrysler reserves the right to discontinue models or options at any time or change specifications and materials, equipment or design without notice and without incurring obligation.

Some of the equipment may not be exactly as shown in this catalogue. Some of the equipment described or illustrated in this catalogue may not be standard, and may be available only at extra cost, as factory installed or retailer installed; items described as "available" may be standard on some models and optional, or not available, on others. Equipment referred to as "available" or "optional" may be at extra cost. Some options are required in combination with other options. For the price of the model with the equipment you desire or verification of specifications and equipment availability described herein, see your Chrysler, Jeep®, Dodge retailer.

Colour availability may vary by model. Due to printing limitations, the colours shown here and throughout the catalogue may vary slightly from the actual hue. See your retailer to view accurate colour chips.

Jeep is a registered trademark of DaimlerChrysler Canada Corporation, used under licence by DaimlerChrysler Canada Inc.

©2004 DaimlerChrysler Canada Inc. All rights reserved.

2007 Chrysler, Jeep®, and Dodge vehicles are backed by a 5-year or 100,000-kilometre* fully transferable Powertrain Warranty with \$0 deductible, plus 24-hour roadside assistance. † Basic Warranty coverage is for 3 years or 60,000 kilometres. * Rust-through coverage on all body sheet metal is for 3 years. The Cummins® Turbo Diesel engine is protected by a separate Limited Warranty, covering the engine for 5 years or 160,000 kilometres.*

*Whichever comes first. †Some conditions may apply. The 5/100 Warranty does not apply to vehicles sold for certain commercial uses or to SRT including Viper models. See your retailer for details.

In Gear

For those who choose to navigate the city streets or the less travelled paths of the backwoods. Jeep Goods will provide you with rugged high-quality merchandise fit for the Jeep way of life! Jeepgoods.ca



THE AUTHENTIC DIFFERENCE: A JEEP® ORIGINAL, BY DESIGN.

START WITH A UNIQUE JEEP® VEHICLE. Then add Authentic Jeep Accessories by Mopar designed and engineered to meet the strict standards expected from the official parts and accessories division of DaimlerChrysler. That's the Authentic Difference — a difference you can't find anywhere else in the aftermarket. From the boldly rugged styling of

Chrome Tubular Bumpers and Premium Chrome Wheels, to the enjoyment potential of a Navigation Radio, our Accessories are designed by a DaimlerChrysler engineering team to offer your Wrangler premium protection, convenience, style or entertainment. With Authentic Jeep Accessories by Mopar, the possibilities are boundless.

FIT FOR ANY OCCASION. ►

The **BLACK-TIE PACKAGE** adds a bit of formality to your off-road functionality.

[A] Premium Chrome Wheels. Our wheels are machined to match your vehicle's hubs for a balanced ride.

Black-Tie Decal. Show that your Jeep Wrangler is dressed for success.

Chrome Mirror Covers. Perfectly reflect your personal sense of style.

[A/B] Front and Rear Chrome Tubular Bumpers. Proof that appearances are everything.

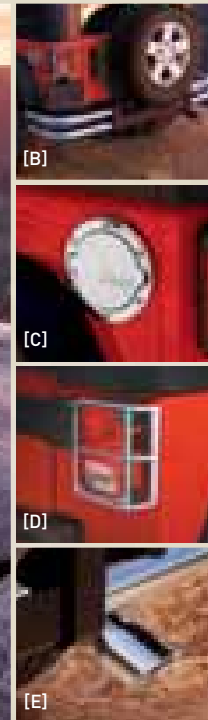
[C] Chrome Fuel Filler Door. Brightly complements any body colour.

[D] Chrome Tail Lamp Guards. Make a stylish impact around town with added protection off-road. Also available in Black.

[E] Chrome Exhaust Tip. Adds a bright touch out back.



[A] ALSO SHOWN WITH CHROME TUBULAR SIDE STEPS



HAPPY TRAILS TO YOU.

The **OFF-ROAD PACKAGE** is never off track when it comes to exceptional trail performance.

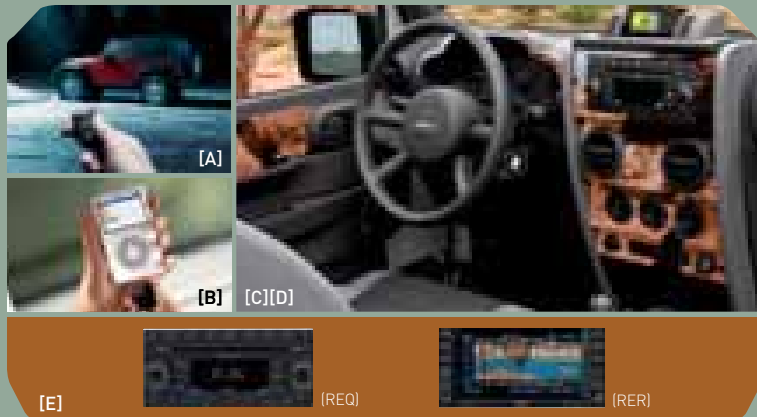
Skid Plates. Designed to take everything you dish out. They are constructed of heavy-duty steel to help protect vital components. The Skid Plates also allow an optional Hitch Receiver to be installed. **Warn® Winch!**⁽¹⁾ Here's a friend with major pull. This popular accessory includes a Hawse Fairlead that packs 4309 kg (9500 lb) of pulling capacity into a sealed, water-resistant die-cast body structure.



Off-Road Bumpers. Front and Rear Bumpers are designed to maintain Wrangler's excellent ground clearance.

The Front Bumper features an integrated winch mount, grille guard and fog light mounts. The Rear Bumper clears the tow hook and all our hitch receivers and features integrated tow eyes.

⁽¹⁾ Heavy-duty battery, springs and shock absorbers recommended for winch installation. Off-Road Bumpers required.



PREMIUM ELECTRONICS: TURN ON, TUNE IN AND HEAD OUT.

[A] Remote Start. Hit the ground running with the ability to start your vehicle from up to 244 metres (800 feet) away. The system is designed to operate seamlessly with your vehicle's electronic system. A two-way remote start system is also available.

[B] iPod® Interface Module. This FM-bounded system allows you to play your iPod music files through your vehicle's audio system and maintain your music selection through your iPod control button.

[C] Trail Guide® Navigation System. Explore the great outdoors with this affordable and portable GPS module that features a transfective colour display, full mapping capabilities, turn-by-turn instructions, directional voice prompts and a rechargeable lithium-ion battery.

[D] Red Rock Appliqué Kit. Your Wrangler will really feel right in its element with this unique red rock design. The appliqué is designed to seamlessly follow the contours of your door panels, instrument panel and centre bezel. Other custom finishes include Carbon Fiber, Brushed Silver and Dark Bird's-Eye Maple.

[E] Premium Radios. Our premium radios are designed to work perfectly with your vehicle's existing electrical system and integrate seamlessly with your dash. Each features 66 watts of total power, 12 AM and 12 FM presets.

- **(REQ)** AM/FM stereo with integrated 6-disc CD/MP3 player
- **(RER)** AM/FM stereo with CD player and Navigation Radio (late availability)

EVS® I and EVS® II (Electronic Vehicle Security). Get a lock on safety with an EVS security system. EVS I is designed to work with your factory-provided keyless entry and EVS II is designed for vehicles without keyless entry and includes two, two-button key fob transmitters. Both systems provide perimeter and interior protection with horn-honk alarm, starter interrupt and dash mounted LED (not shown).

AUTHENTIC JEEP® ACCESSORIES BY MOPAR

1. Tent Kit. Experience the great outdoors inside your Wrangler. Tent attaches to the rear of your Wrangler for maximum sleeping and storage space, and easily stands alone if detached from your vehicle.

2. Side Window Air Deflectors. These tinted, acrylic visors accent your Wrangler's windows for a sleek profile. That's a bonus, because their original function is to let you partially open your window and still remain dry during inclement weather.

3. Jeep Freedom Top™ Carrier. This handy carrier mounts to your Wrangler's spare tire is designed for fast and secure storage of your Jeep Freedom Top panels when not in use, with the added bonus of freeing up your interior for additional cargo capacity.

4. Door Sill Guards. Liven up your doors with some stylish protection. These guards protect your door sills and are available in Black plastic or stainless steel with embossed Jeep® logo.

5. Chrome Tubular Side Steps. Get tubular with these 3-inch round chromed aluminum steps, complete with textured stepping surfaces. Steps feature Jeep logo and mount securely with corrosion-resistant, steel mounting brackets. No drilling required.

6. Front End Cover and V-Hood Cover. We've got you covered when it comes to protecting the front of your Wrangler from damage caused by gravel, insects and road debris. Front End Cover is designed to fit the contours of your Wrangler's front end. **V-Hood Cover** features turned-under and sewn edges. Both are available in Black vinyl with foss backing to protect your vehicle's paint and Clear Coat finish.



7. Spare Tire Mounted Bike Carrier. Tackle even more trails with this unique carrier that mounts over your rear mounted spare. Easily carries two bikes with crossbars and includes a locking cable to hold the bikes securely.

8. Front Air Deflector. Say yes to rugged style and no to road spray, dirt and other debris scratching and damaging the hood of your new Wrangler with this popular accessory.

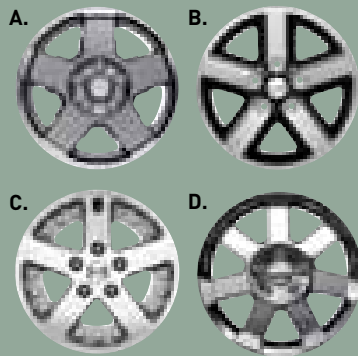
9. Tow Hooks. Heavy-duty forged steel hooks includes choice of 2268 kg (5000 lb) capacity Front Hooks that mount to vehicle frame or a 1814 kg (4000 lb) capacity single rear hook that mounts to production mounting holes.

10. Windshield Mounted Light Bracket and Mirror Relocation Bracket. When it's time for doors-off travel, our mirror brackets allow you to retain your rear-view mirror. Brackets include a breakaway feature when the going gets tough.

11. Satin Black Tubular Side Steps. Get a step up in style while getting in and out of your Wrangler with ease. Extra-wide stepping surfaces also help prevent slipping. Also available in Chrome. **Moulded Splash Guards.** Help protect the body of your vehicle from damage caused by gravel, salt and road debris. Guards match the wheel flare Black finish and feature the Jeep® logo.



A NEW SPIN ON STYLE. Our premium wheels are machined to match your vehicle's hubs exactly for a smooth and balanced ride. They also undergo stringent testing for optimal durability and a guaranteed, long-lasting shine.



- A. The Hulk Wheel**
- B. Black and Silver Aluminum Wheel**
- C. Beadlock RockMonster Wheel**
- D. 18-Inch Chrome Cast Aluminum Wheel**

1. Premium Carpet Floor Mats. Thick enough that you'll want to go barefoot. Durable enough to take a pounding from the elements and colour-matched to your Wrangler's interior. 20-oz Sisal carpet is featured.

2. Slush-Style Mats for Front and Rear. Heavy-duty Slush Mats feature a custom design with unique tire tread and mud graphics to help prevent water, snow and mud from doing a number on your Wrangler's carpet.

3 & 4. Window Storage Bag, Upper Half Door Storage Bag and Targa Top Storage Bag. When it comes to keeping your Wrangler's windows and soft tops organized and protected, it's in the bag. Both bags are constructed of durable Black vinyl with linen lined separate compartments and feature the Jeep® logo.

5. Cab Cover. Weather-resistant quality nylon cover is available in Black or sun-reflective Silver and fits snugly over your Wrangler's hardtop, soft top or no top.

6. Hitch Receivers.⁽¹⁾ Available in Class I and Class II capabilities, our hitch receivers can tow up to 1588 kg (3500 lb) (Unlimited only) with proper equipment and can be used with production or our Tubular Bumper. Class I Hitch includes Ball Mount and 1 7/8" Hitch Ball. Wiring Harness and Hitch Receiver Plug sold separately.

7. Rear Cargo Area Lockable Storage. Add some piece of mind by creating lockable storage space behind the rear seat that's easily accessed thru the tailgate to hold outdoor gear. Two- and four-door versions available.

8. Spare Tire Covers. Tire Cover material matches your soft top colours and fabrics. All covers feature an elastic anchor or anti-theft zipped closure to secure cover around tire and a unique design to express your outgoing nature.

9. Roadside Safety Kit. The essential trail kit for serious off-roaders. This large multipocket nylon tool bag features the Jeep logo and contains jumper cables, large fleece blanket, leather gloves, multifunction flashlight, 5 cm x 6.1 metres [2 inch x 20 foot] recovery tow strap and heavy-duty tote bag.

⁽¹⁾Check Owner's Manual for hitch type, load capacity and heavy-duty equipment required. Trailer may require items not supplied by Mopar.

10. Rock Rails. Our rails feature strong integrated rub bars that run the length of the guards to offer great bodyside protection. And, because they're mounted at the same height as the bodyside, they don't reduce ground clearance. Rock Rails feature a textured Satin Black finish that meets tough Jeep corrosion standards.

11. Water-Resistant Front and Rear Seat Covers. Get wet and wild while you stay high and dry. Custom-fit seat covers are constructed of "wetsuit" material designed to keep dirt and moisture off your seat surfaces. Passenger side cover includes a seatback pocket and both feature Jeep logo and are easily removable for cleaning. Not compatible with seat mounted side air bags.

Hardtop Storage Dolly.

This Storage Dolly holds a hardtop, Jeep Freedom Top™ panels and doors. The dolly features large coaster wheels and includes a large zippered cover.



Additional Jeep Accessories by Mopar:

Battery Heater, Engine Heater, Grab Handle and Clothes Hook, Jeep Storage Bag, Locking Gas Cap, Premium Vehicle-Care Products, Production Running Board Kit, Ruggedized Floor Liner Kit, Soft Top/Hardtop Replacement Kit, Window Kits, Speed Control, Sway Bar Disconnect Kit, Trailering Accessories, Wheel Locks, Winch Accessory Kit, and a Vehicle Cover.



ADVENTURE? WE'RE ON TOP OF IT.

Combination Kit (shown above). Includes rear seat area Tonneau Cover with snapless attachment system; Windscreen (including rear window); and durable, soft top-material Sun Bonnet. The Kit is available in Black and Khaki.

Sun Bonnet (shown bottom left). Constructed of durable soft-top material, our popular Sun Bonnet is compatible with both soft- and hardtop vehicles. It features an excellent seal to the windshield header. Available in Black or Khaki.

Soft Top Boot (shown bottom right). Let the sun shine in. The Boot installs easily to protect your soft top when it's folded down and includes a special zippered pouch to store your soft top windows.



ROCK-SOLID PERFORMANCE. Wrangler shown with a 1814 kg (4000 lb) capacity Rear Tow Hook (Receiver Shackles), Rock Rails for added bodyside protection, Off-Road Rear Bumper, Tail Lamp Guards for good looking protection, a Class II Hitch Receiver, the always-stylish Black Fuel Filler Door and an Outside Tire Carrier Kit that swings open, providing easy access to your gotta-have gear.



Enhance your Jeep Wrangler with Authentic Dodge Accessories by Mopar. They're designed specifically for your vehicle, for exceptional fit, finish and performance. Visit your dealership or mopar.ca.



COMPASS

PATRIOT

(Coming Spring 2007)

LIBERTY

GRAND CHEROKEE

COMMANDER

WRANGLER

WRANGLER UNLIMITED

Jeep[®]

Learn more @ jeep.ca or call 1-800-361-3700



PRINTED ON PAPER WHICH CONTAINS A MINIMUM OF 10% POST-CONSUMER RECYCLED FIBRE.

PRINTED IN CANADA 5207-C-576E