



**MOPAR PERFORMANCE PARTS.<sup>(1)</sup>**

**1. COLD AIR INTAKE KITS.**

These kits help to provide horsepower and torque gains under varying atmospheric conditions. Cold Air Intake Kits include all necessary mounting hardware.

**2. HOOD PROP KIT.**

Choose this kit for easy opening and closing of your Wrangler's hood by eliminating the single hood prop rod. This Authentic Accessory holds your hood open at a convenient angle and includes two gas struts and mounting hardware.

**3. CAT-BACK EXHAUST SYSTEM.**

Features T304 stainless steel construction with mandrel-bent tubing, stainless band clamps, and polished tips. This free-flow system helps to provide horsepower and torque gains and a deeper tone.

**4. SNORKEL SYSTEM WITH PRE-FILTER.**

Fits the Heat Reduction Hood or the production hood. This snorkel lets you play it safe when you hit the trail, helping to keep your engine breathing clean, fresh air. The pre-filter adds a higher level of protection from dust and dirt.

**5. HEAT REDUCTION HOOD.**

Three mesh vent areas allow heat to escape and add aggressive design appeal. Arrives fully E-coated and ready to paint. Use existing factory hardware to ensure a proper fit.

**6. HOOD VENT.**

This Hood Vent is designed to improve air flow and keep out debris. Constructed of durable ABS plastic and features an attractive Black paintable finish.

**ADDITIONAL ACCESSORIES:**

- Battery Blanket Heater
- Cargo Tote
- Engine Block Heater
- Front Seat Lock Box
- Golden Eagle Hood Decal
- Jeep Storage Bags
- Keyed Hood Lock
- Locking Gas Cap

- Master Shield® Car Care Products
- Premium Vehicle-Care Products
- Production Running Board Kit
- Speed Control Kit
- Sway Bar Disconnect Kit
- Trailer Accessories
- Vehicle Cover

**ADDITIONAL PERFORMANCE PARTS:<sup>(1)</sup>**

- Ring and Pinion Gear Sets
- Rock-Trac® Transfer Case

<sup>(1)</sup> Mopar Performance Parts are sold "as is" unless otherwise noted.

**START WITH AUTHENTIC ACCESSORIES BY MOPAR.<sup>®</sup> DON'T STOP UNTIL YOU'VE REACHED THE FINISHING TOUCH.**

Whether it's a new Jeep<sup>®</sup> vehicle or one that's been under your care for years, there's no better way to personalize it than to add Authentic Jeep Accessories by Mopar. In choosing Authentic Accessories you gain far more than premium protection or extreme entertainment — you also add a distinctive sense of style that stands out.

Don't settle for anything other than Authentic Accessories featuring a fit, finish, and functionality specifically for your Jeep vehicle. Authentic Jeep Accessories by Mopar are available through your local Chrysler, Jeep, Dodge, and Ram retailers.



AUTHENTIC JEEP ACCESSORIES

Since the time of printing, some of the information you'll find in this catalogue may have been updated. The appearance of accessories shown may vary depending on vehicle application. Some products are not manufactured by Mopar and may be covered by an independent product manufacturer's limited warranty. See your retailer for the latest Mopar product information. Visit the Mopar Web site at mopar.ca. ©2011 Chrysler Group LLC. All rights reserved. Mopar, Chrysler, Dodge, Ram, Jeep, the Jeep grille, Wrangler, Rubicon, Rock-Trac, Freedom Top, Master Shield, and Tru-Lok are registered trademarks and Uconnect is a trademark of Chrysler Group LLC. iPod and the iPod design are registered trademarks of Apple Inc. Garmin and nüvi are registered trademarks and ecoRoute, nuRoute, trafficTrends, and myTrends are trademarks of Garmin Ltd. Sunrider is a registered trademark and Element and TrekTop are trademarks of Bestop, Inc. Thule is a registered trademark of the Thule Group. KICKER and the KICKER logo are registered trademarks of Stillwater Designs and Audio, Inc. Katzkin and the Katzkin logo are trademarks of Katzkin Leather Interiors, Inc. Bluetooth is a registered trademark of Bluetooth SIG, Inc. TORX is a registered trademark of Textron Inc. Hella is a registered trademark of Hella Inc. WARN is a registered trademark of Warn Industries, Inc. Dana is a registered trademark of Dana Corporation. SIRIUS and all related marks and logos are registered trademarks of SIRIUS Radio, Inc. All other trademarks are the property of their respective owners.



Printed in Canada

FOR THOSE WHO CHOOSE THEIR OWN PATHS.



SHOWN ON COVER: CLASSIC FIVE-SPOKE DARK ARGENT WHEEL, CHROME GRILLE, FENDER FLARES, ELEMENT™ DOORS, LIFT KIT, OFF-ROAD BUMPERS, ROCK RAILS, WARN® WINCH, WINDSHIELD-MOUNTED OFF-ROAD LIGHTS, KATZKIN™ LEATHER INTERIOR, AND EXTREME TRAIL EDITION CAMPER (CAMPER SHOWN WITH OPTIONAL WHEELS).



As a Jeep® Wrangler owner, your natural instinct is to steer clear of the painted lines. And that's just where Authentic Jeep Accessories come into play. With accessories like a WARN® Winch that can help you out of a jam — as well as Off-Road Lights and a Skid Plate to help keep you from getting in one — taking the path of least resistance is the last thing you'll want to do.

**1. WINDSHIELD-MOUNTED OFF-ROAD LIGHTS<sup>(1)</sup>**

These heavy-duty Off-Road Lights come in a set of two, include lens covers, and are available in five- or seven-inch round lights. Brackets are sold separately; no drilling is required.

**2. CLASSIC FIVE-HOLE WHEEL.**

Made to accommodate wider tires with 117 mm of backsacing. Available in Silver and Black.

**3. SKID PLATE.**

Designed to slide over obstacles, the Black Skid Plate is constructed of heavy-duty steel to help protect the steering gear.

**4. TOW HOOKS.**

Tow Hooks are designed to help you get out of difficult situations. Available in Black.

**5. OFF-ROAD BUMPERS.**

Heavy steel Front and Rear Bumpers feature compact dimensions for excellent ground clearance. The Front Bumper features Fog Lights, a Grille Guard, and is tested to be compatible with the air bag system. Front Bumpers are available with and without an integrated Winch Mount. The Rear Bumper clears all our hitch receivers and is equipped with tow eyes. For added convenience, a Swing-Away Tire Carrier that fits up to a 37-inch spare tire is also available.

**6. WARN WINCHES.<sup>(2)</sup>**

Our extensive lineup features four winches with Hawse Fairleads. Each winch features a sealed water-resistant die-cast body structure. Synthetic winch line is also available.

**7. WINCH RECOVERY GEAR AND BAG.**

This off-road Recovery Gear Kit is a must for any Jeep owner. Kit includes heavy-duty snatch block pulley, 9.1-m recovery strap, tree trunk protector, a pair of D-rings, winch line dampener, and recovery gloves. Also includes a durable bag, featuring the Jeep logo, to keep your gear neatly organized and ready when you need it.

**8. FENDER FLARES.**

Fender Flares bring a tough new style to your Wrangler's design and protect it from off-road debris. Built of an exclusive material and made to withstand the harshest environments, they provide additional tire clearance and are available in two styles.

**9. BLACK FUEL FILLER DOOR.**

Unique filler door adds contrast to any Wrangler body colour and replaces the existing fuel filler door.

**10. HITCH RECEIVER<sup>(3)</sup>**

Hitch Receiver can tow up to 1588 kg (3500 lb) with proper trailering equipment and can be used with Off-Road, Tubular, or production Bumpers. Ball Mount, Hitch Ball, Wiring Harness, and Hitch Receiver Plug are sold separately.

**11. SWING-AWAY TIRE CARRIER.**

Carrier is designed to move the weight of the spare from the body to the frame. Accommodates up to a 37-inch spare tire and mounts to rear Off-Road Bumper.

**12. CORNER GUARDS.**

Besides adding a measure of rough-and-ready style, these rear Corner Guards help protect your Wrangler from dings, scratches, and bumps. Made to fit like custom-sized gloves, these heavy-duty Guards are stamped from 1/8-inch steel and painted Black.

**13. AUTHENTIC JEEP ACCESSORY EMBLEM.**

Let everyone know your accessories are the real deal. Aluminum emblem features Silver lettering on Black background.

<sup>(1)</sup>Check provincial and local regulations for installation and use. <sup>(2)</sup>Heavy-duty battery, springs, and shock absorbers recommended for winch installation. Off-Road Bumper required for mounting. <sup>(3)</sup>Check User Guide for hitch type, load capacity, and heavy-duty equipment required. Do not exceed rated tow capacity of the vehicle as equipped.

CHECK US OUT AT MOPAR.CA

OUT HERE, ITS CAPABILITY SHINES.



**1. CHROME GRILLE.**

This Grille adds head-turning good looks and meets the toughest corrosion-resistance requirements, with a design that won't adversely affect the cooling system.

**2. STAINLESS STEEL HOOD LATCHES.**

Add a touch of style to your Jeep® Wrangler's front end. These Hood Latches are stainless steel and designed to replace the standard factory latches. Thick, corrosion-resistant, and polished to a keen shine, with an integrated moulded rubber tension strap.

**3. STAINLESS STEEL WINDSHIELD BRACKETS.**

Upgrade your outlook on the world with heavy-duty Windshield Brackets. Corrosion-resistant polished stainless steel creates a beefy customized appearance. Exclusive matching TORX® head stainless steel screws fit original factory-mounting points and add the perfect bolt-on touch.

**4. CHROME MIRROR COVERS.**

Reflect your personal sense of style with these bright chrome covers that meet Jeep brand standards for quality, fit, and finish.

**5. CHROME DOOR HANDLE COVER KIT.**

These new chrome door handle covers will complement the look of your vehicle. The two- or four-door kits contain covers for each door handle, including the tailgate, and are easy to install.

**6. CHROME RECESS CUP.**

Give your Wrangler a customized look while helping to protect the paint from scratches. Dish-shaped guards are available for two- or four-door models. Each kit includes a guard for every door handle plus the tailgate. Available in Black or chrome.

**7. CHROME TUBULAR SIDE STEPS.**

These premium steps are constructed of four-inch oval chromed aluminum and are available for two-door and four-door Wranglers. Steps feature textured stepping surfaces and step pads with the Jeep logo. Tubular steps are designed to mount securely with corrosion-resistant steel

mounting brackets. No drilling required. Also available in Satin Black for two-door and four-door Wranglers.

**8. PREMIUM CHROME WHEEL.**

Our 18-inch wheel features a seven-spoke design and is machined to match your vehicle's exact specifications for a balanced ride and provide a long-lasting shine.

**9. FRONT AND REAR CHROME TUBULAR BUMPERS.<sup>(1)</sup>**

Proof that appearances are everything, these bumpers feature corrosion-resistant tubing and are also available in Satin Black.

**10. CHROME FUEL FILLER DOOR.**

This sculpted design covers the existing fuel cap and brightly complements any body colour. The Fuel Filler Door is also available in Satin Black.

**11. CHROME REAR-WINDOW HINGE COVERS.**

Accentuate the look of your Wrangler's rear window with these easy-to-apply Hinge Covers. No tools, cutting, or drilling required.

**12. CHROME EXHAUST TIP.**

Add a bright touch out back and round out your chrome look with this popular accessory.

**13. CHROME DOOR HANDLE INSERTS.**

Reflect your good taste with these two-piece inserts that fit snugly into your Wrangler's door handles and push buttons. The kit contains six or ten pieces, one set for each door. Available for two- or four-door models.

**14. CHROME DOOR HINGE COVERS.**

Overlays your vehicle's production door hinges for upgraded style without harming the paint.

**15. CHROME TAILLAMP GUARDS.**

Make a stylish impact around town with added off-road protection. Also available in Satin Black.

**16. CHROME TAILGATE HINGE COVERS.**

Complete your chrome updates when you accent the tailgate with these eye-catching covers.

<sup>(1)</sup>These products are designed solely to enhance the appearance of the vehicle; they are not intended to prevent injury or damage in the event of an accident.

HAULS DIRT AND DREAMS WITH EQUAL EASE.



## JK-8

### 1. JK-8 TRUCK CONVERSION KIT.

Inspired by the Jeep® Scrambler CJ-8 of years past and the J-8 military Jeep vehicle, Mopar® brings you this exciting new Conversion Kit. It allows you to combine the best of both worlds and utilize the capabilities of a four-door Wrangler with the functionality of a durable two-seat pickup truck. Do-it-yourselfers can transform four-door Jeep vehicles with these ready-to-go parts, or have it installed by their Mopar retailer.

### 2. HARD TOP WITH FREEDOM TOP® PANELS.

Designed with comfort and convenience in mind, this removable Hard Top features easy-to-remove Freedom Top panels and a sliding rear window. Hard Top features a smooth finish.

### 3. BULKHEAD.

This body panel protects the interior of the truck, preventing items from sliding into the cabin, keeping the inside safe and secure.

### 4. JK-8 INDEPENDENCE TRUCK BED FLOOR.

Length: 1270 mm; Width: 1118 mm between wheel wells. Shown with a spray-on bedliner.

### 5. BODY PANELS.

Contains all the Body Panels needed to complete the exterior look of the truck. Body Panels and Hardtop require paint and body work to install.



BEHOLD, THE CONQUERING HERO.



### 1. PREMIUM FRONT OFF-ROAD BUMPER.

Hard-core off-road riders can install this heavy-gauge triple-coated steel Front Bumper. Designed to clear 37-inch tires. Bumper is available with or without grille guard. Four WARN® Winch models are available, sold separately.

### 2. PREMIUM REAR OFF-ROAD BUMPER AND TIRE CARRIER.

For enhanced protection on the highway and the trail, this unique all-steel component is cleverly designed to allow separate installation of both the bumper and the 1016-mm tire carrier. A built-in

fluid carrying system constructed from tough cross-link polyethylene can hold nearly five gallons of liquid. Anti-vibration tie-rod adjustment helps to keep everything tight and tidy.

### 3. CLASSIC FIVE-HOLE WHEEL.

As timeless as the Wrangler itself, this wheel design is at once stylish and sporty. Made to accommodate wider tires with 117 mm of backspacing. Available in Silver and Black.

### 4. ROCK RAILS.

Our Rails offer great bodyside protection. Mounted at the same height as the body side, they don't reduce ground clearance. Rock Rails also feature a textured Satin Black finish.

### 5. HALF-DOOR KIT.

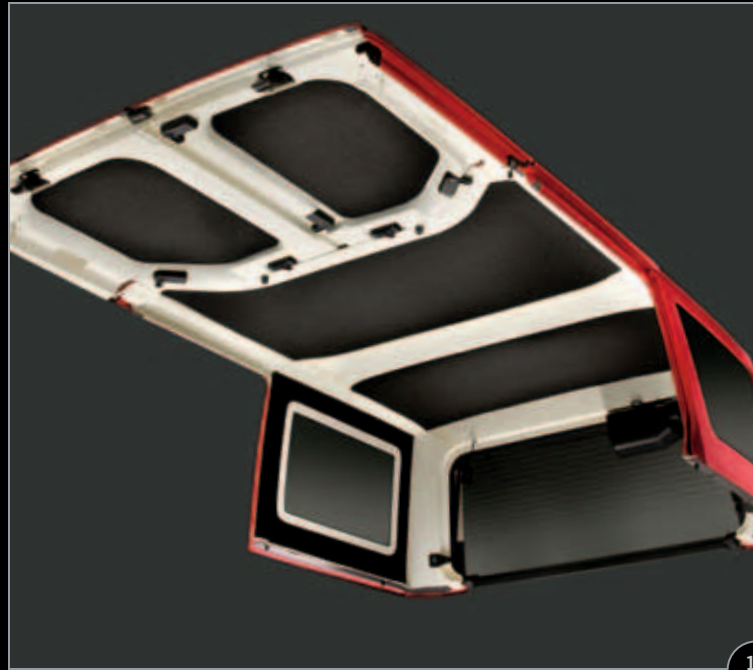
These Half-Door Kits improve your panoramic view, while offering security and protection. The kit includes one pair of lower-half doors that are identical to production models, E-coated, and ready to paint.

### 6. WINDSHIELD-MOUNTED OFF-ROAD LIGHTS — HELLA® 500 OR 700!®

These lamps provide brilliant performance and off-road durability. They're ideal for dark country roads and finding your way through the woods. The lightweight material and powerful bulbs are shielded with an impact-resistant ABS housing. The vapour-coated aluminum reflector ensures clear, bright light in all driving conditions. Set of two. Shown with included Hella light covers. Brackets sold separately; no drilling required.

®Check provincial and local regulations for installation and use.





1



2



2



2



3

## WIDE-OPEN PERSONALITY.

### 1. HEADLINER.

Add a layer of protection between you and the outside elements. This Headliner is for the Hard Tops and helps to reduce road noise and protect occupants from extreme weather conditions.

### 2. BLACK OR BODY-COLOUR HARD TOP.

The premium Hard Top features dark-tint glass side-quarter windows and a glass liftgate. A rear wiper and defroster are also included in the kit. Identical to production Hard Top. Now available in select body colours or primed.

### 3. SOFT TOP.

Tough Soft Top features two quick-release header latches to raise and lower the top with minimum effort. Zip-out windows, heavy-duty seams, and an exclusive door frame system minimize wind noise and water leaks. Identical to the production Soft Top, the Sunrider® feature is also available.

### 4. SUN BONNET, WINDSCREEN, AND TONNEAU COVER.

Sun Bonnet is constructed of durable soft-top material. It features an excellent seal to the windshield header. Available in various colours and styles. Windscreen and Tonneau Cover are available for both two- and four-door models.

### 5. TREKTOP.™

Improved "bowless" Top uses Wrangler's sports bars for shape and support, for a raceback look that stands out from the crowd. With removable windows, factory-style door surrounds, Sunrider sunroof features, and a factory-style header bar that uses aircraft-quality aluminum to help retain shape and fit.

### 6. SOFT TOP BOOT.

The Boot protects your Soft Top when it's folded down and includes a special zippered pouch to store your Soft Top windows.

### 7. HARD TOP STORAGE DOLLY.

This Storage Dolly holds a Hard Top, Freedom Top® panels, and two doors. The dolly features large caster wheels and includes a zippered cover.

### 8. FREEDOM TOP STORAGE BAG.

Keeps your Wrangler's Freedom Top organized and protected, and it stores behind the rear seats.



4



5



6



7



8



9



10

### 9. & 10. ELEMENT™ DOORS AND STORAGE BAGS.

Enjoy exterior protection and interior ventilation. Heavy-duty 1¼-inch tube construction easily accepts production mirrors with a no-drill application. Includes two Element Doors with paddle handles and door latches. **STORAGE BAGS.** Position these heavy-duty Storage Bags with the pockets facing inside or outside to help keep your essentials organized and close. In addition, the armrest area makes your ride more comfortable and secure. Bags come with Element Doors.

### 11. ELEMENT DOOR ENCLOSURE KIT.

Add style and extra protection to your Element Doors. Kit includes two steel Black powder-coated paintable door frame covers to help keep the elements out.

### 12. FREEDOM TOP® CARRIER.

This handy Carrier mounts to your Wrangler's spare tire for fast and secure storage of your Freedom Top panels.

### 13. WINDOW STORAGE BAG.

Holds and protects your three removable Soft Top windows.

### 14. HALF-DOOR WINDOW KIT AND UPPER-HALF-DOOR STORAGE BAG.

Upper-Half Door Windows are available as a set and fit into the half-doors. Storage bag also available; sold separately.

### 15. CAB COVER.

Weather-resistant quality nylon Cover is available in Black or sun-reflective Silver and fits snugly over your Wrangler's hard top, soft top, or no top.



11



12



13



14



15

## GO ANYWHERE CAMPER TRAILERS.



Introducing Mopar's first off-road Camper Trailers, featuring innovative engineering tested for Jeep® capability. We've incorporated Jeep Wrangler's rugged design cues, including Rubicon 17-inch cast-aluminum wheels, taillights, fender flares, rear bumper (Trail Edition Camper only) badge, and hood tie-downs. Available in a variety of colours to match your Jeep vehicle.

### 1. TRAIL EDITION CAMPER.

Embrace trails with lightweight all-aluminum construction, 32-inch Mud Terrain tires, 305 mm of ground clearance, trailing-arm suspension, aluminum top (capable of supporting 206 kg [450 lb] of gear), and optional 360-degree axis pintle hitch. Provides spacious 1930 mm of headroom, and features a queen-size bed, fold-down sofa, table, cabinet, 110-volt power supply, and a premium canvas enclosure.

### 2. EXTREME TRAIL EDITION CAMPER.

Hard-core off-road enthusiasts can up the ante with a heavier frame, 35-inch tires, 381 mm of ground clearance, and full-underbody skid plate.

### 3. ADD-A-ROOM.

Tent attaches to both the Trail Edition and Extreme Trail Edition Campers. Sold separately.

### 4. TENT KIT.

Tent attaches to the rear of your Jeep Wrangler to maximize your storage and sleeping space and stands alone if detached from your vehicle. Available in two sizes.

### 5. SPARE TIRE-MOUNTED BIKE CARRIER.

This unique carrier mounts securely onto your spare tire. Easily carries two bikes with crossbars and includes an antitheft cable.

### 6. SPARE TIRE-MOUNTED SKI CARRIER.

Ski Carrier holds up to four pairs of skis. It features anodized aluminum construction and integrated locks. **SPARE TIRE-MOUNTED SNOWBOARD CARRIER** is also available and must be used with Spare Tire-Mounted Bike Carrier.



## GO RUGGED. THEN BRING IT HOME IN STYLE.

### 1. FRONT AIR DEFLECTOR.

This popular accessory lets you say "yes" to rugged style and "no" to road spray, dirt, and other damaging debris.

### 2. CHROME GRILLE INSERTS.

Turn heads when you turn your Wrangler grille into an eye-catching chrome-kissed work of art. Easy to install. Also available in Black.

### 3. FRONT END COVER AND V-HOOD COVER.

Protect the front of your Jeep® Wrangler from damage caused by gravel, insects, and road debris. Front End Cover fits the contours of your Wrangler's front end. V-Hood Cover (sold separately) is available in Black to match your soft top.

### 4. ROCK RAILS.

Our Rails offer great bodyside protection. Mounted at the same height as the body side, they don't reduce ground clearance. Rock Rails also feature a textured Satin Black finish.

### 5. SATIN BLACK TUBULAR SIDE STEPS.

Get a step up in style while getting in and out of your Wrangler with ease. Extra-wide stepping surfaces also help prevent slipping.

### 6. MOULDED SPLASH GUARDS.

Help protect the body of your vehicle from damage caused by gravel, salt, and road debris. Guards match the wheel flare's Black finish and feature the Jeep logo.

### 7. & 8. FRONT AND REAR BLACK TUBULAR BUMPERS.<sup>(1)</sup>

Constructed of rugged mandrel-bent tubing that meets tough Jeep corrosion-resistance standards. Both Bumpers match the contours of your Wrangler's body perfectly. Both Front and Rear Tubular Bumpers are available in chrome as well as Black.

### 8. REAR TOW HOOK.

Available in two styles, this Rear Tow Hook gets the job done. Front Tow Hooks are also available (not shown).

### 9. & 10. DIFFERENTIAL COVER AND GUARDS.

Choose from three styles to protect your Wrangler's differential cover and vital driveline gears: Cast-Aluminum Cover (shown, 9), Full-Formed Steel Guard (shown, 10), Half-Formed Steel Guard (not shown). All feature the Jeep logo.

### 11. & 12. PERFORMANCE AXLES.<sup>(2)</sup>

Climb to new heights with these Wrangler axle assemblies that incorporate tough world-class technology for superb strength and durability. Each is shipped with the correct suspension mounting brackets installed, making it easier to adapt to your off-road champion. Axles are available in a variety of sizes.

**FRONT ASSEMBLY.** Dana® 44, Jeep Wrangler, 4.10 ratio, Tru-Lok® electric, selectable locking differential, 5 on 5.0-inch JK wheel pattern, without brakes.

**REAR ASSEMBLY.** Jeep Wrangler Rubicon, 4.10 ratio, Tru-Lok electric, selectable locking differential, 5 on 5.0-inch JK wheel pattern, with brakes.

### 13. SUSPENSION LIFT KITS.

These custom lift kits are Mopar® Performance Parts<sup>(2)</sup> designed especially for your Wrangler to handle serious off-road trails, giving you the benefits of increased ground clearance and better off-road articulation. The two- and four-inch kits are perfect for running larger tires and include springs, specially tuned shocks and steering damper. The kits are also designed to maintain your Wrangler's stability for better on-road performance.

<sup>(1)</sup>These products are designed solely to enhance the appearance of the vehicle; they are not intended to prevent injury or damage in the event of an accident.

<sup>(2)</sup>Mopar Performance Parts are sold "as is" unless otherwise noted.



1



2



3



4



5



6



7



8



9

## YOUR STYLE, DELIVERED INSIDE AND OUT.

### 1. KATZKIN™ LEATHER INTERIORS.

Create your own stylish interior worthy of such a capable ride. Katzkin offers premium leather-faced packages with embroideries, piping, two-tones, suede, and much more in many different colours. Ask your retailer for more information.

### 2. WATER-RESISTANT FRONT AND REAR SEAT COVERS.

Custom-fit Seat Covers are designed to keep dirt and moisture off your seat surfaces. Passenger-side cover includes a seatback pocket, and both feature the Jeep® logo. Not compatible with front-seat side-mounted air bags.

### 3. GRAB HANDLES.

These heavy-duty Grab Handles feature an embroidered Jeep logo, easy-to-hold rubber grips, and durable nylon webbing. Attaches directly to Sport Bar.

### 4. CARGO LINER.

Clean-ups are a snap when you have this thick, heavy-duty Cargo Liner. Helps protect your Wrangler's interior with its raised perimeter wall that traps water, snow, and mud so your factory carpet can remain clean and dry.

### 5. PREMIUM CARPET FLOOR MATS.

Plush enough to rival a fine carpet, yet durable enough to take a pounding from the elements. Colour-matched to your Wrangler's interior, the 591-mm carpet mat is available in Dark Slate Grey.

### 6. ALL-WEATHER HEAVY-DUTY MATS.

Mats feature a custom design with unique tire tread and mud graphics to help prevent water, snow, and mud from doing a number on your Wrangler's carpet. Available in Dark Slate Grey.

### 7. BLACK DOOR SILL GUARDS.

Get great interior Door Sill protection in a durable Black plastic guard that features the Jeep logo.

### 8. DOOR SILL GUARDS.

Liven up your doors with some stylish protection. These stainless steel guards protect your door sills and are etched with the Jeep logo.

### 9. CHROME HOOD HINGE COVERS.

Simply overlay your Wrangler's existing hinges for a long-lasting durable shine. No drilling required.



5



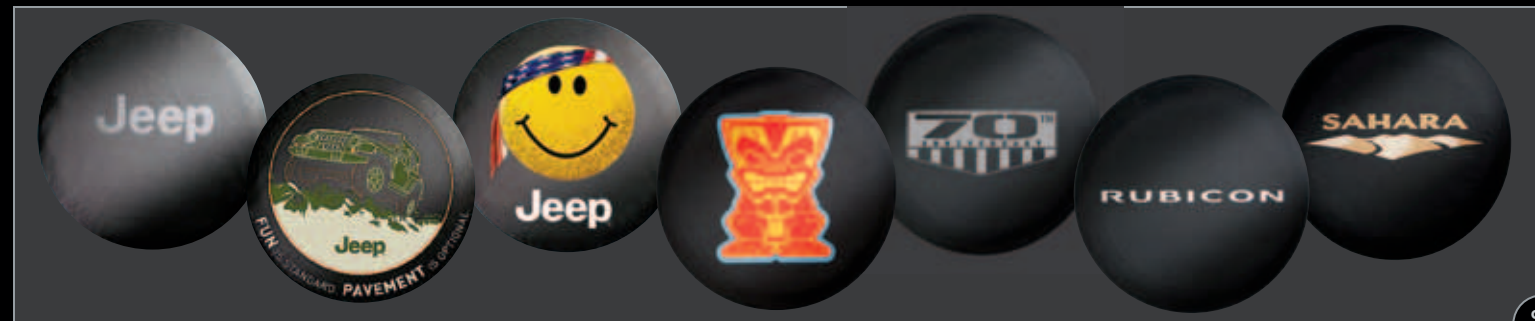
6



7



8



9

## A REFLECTION OF YOUR CHARACTER.

Our premium wheels are machined to your vehicle's exact specifications for a smooth and balanced ride with a long-lasting shine. All wheels are compatible with tire pressure sensors.

### 1. & 2. CLASSIC FIVE-HOLE CAST-ALUMINUM WHEEL.

As timeless as the Wrangler itself, this 17- by 8.5-inch wheel design is stylish and sporty at once. Made to accommodate wider tires with 117 mm of backspacing. Available in Silver and Black.

### 3. & 4. CLASSIC FIVE-SPOKE WHEEL.

A classic 5-spoke 17- by 8.5-inch design gives your vehicle a true off-road feel. Made to accommodate wider tires and available in both Bright Silver and Dark Agent.

### 5. 17-INCH HULK WHEEL.

### 6. 18-INCH CHROME-ALUMINUM WHEEL.

An inexpensive stamped Steel Wheel for winter/off-road tires.

### 8. WHEEL LOCKS.

Includes five new lug nuts and a special fitting key to offer maximum wheel- and tire-theft protection.

### 9. SPARE TIRE COVERS.

Tire cover material matches your Soft Top colours and fabrics. All Covers feature an elastic anchor.

CHECK US OUT AT MOPAR.CA



## PLUG-IN-AND-PLAY PERSONALIZATION.

### 1. BUMPER-MOUNTED LIGHT BAR.

These lights easily mount over and around the existing factory front bumper of your Wrangler. No vehicle modifications, drilling, or cutting are needed. Constructed from durable steel tubing. Each bar can hold up to three off-road lights (sold separately).

### 2. WINDSHIELD-MOUNTED OFF-ROAD LIGHTS — HELLA® 500.<sup>(1)</sup>

These five-inch lamps have everything it takes to provide brilliant performance and off-road durability. They're ideal for dark country roads and finding your way through the woods in your Wrangler. The lightweight material and powerful bulbs are shielded with an impact-resistant ABS housing. The vapour-coated aluminum reflector ensures clear, bright light in all driving conditions. Set of two. Shown with included Hella light covers. Brackets sold separately; no drilling required.



### 3. WINDSHIELD-MOUNTED OFF-ROAD LIGHTS — HELLA 700.<sup>(1)</sup>

This seven-inch version of the auxiliary lamp kit features a lightweight design, aluminum vapour-coated reflector, and sturdy shockproof housing for improved optics over the standard lens. It's ideal for off-road activity and includes two lamps, protective covers, 55W bulbs, wiring harness with switch, relay, and instructions. Brackets sold separately; no drilling required.



### 4. MIRROR RELOCATION BRACKET.

Easily move your factory-installed mirrors from your doors to the body of your Wrangler. The no-drill design mounts to existing factory body bolts. Constructed of Black powder-coated steel and includes a Black steel filler plate for the door. Sold in pairs for both driver- and passenger-side mirrors.



### 5. AMBIENT LIGHT KIT.

These LED lights mount under the dash to add a perfect amount of accent lighting to both the driver and front-passenger footwells. Eight colour settings and low/high lighting intensity let you select one perfect interior ambience.

### 6. HEATED SEATS.

We'll gladly put you in the hot seat. Our Heated Seat Kit is sold in pairs for the front seats and includes three heat settings for optimal temperature control.

### 7. REMOTE START.<sup>(2)</sup>

Hit the ground running with the ability to start your vehicle with the touch of a button. The system operates seamlessly with your vehicle's factory electronic security system.

### 8. ECOMETER.

If you want to monitor your fuel efficiency, then the Ecometer is for you. Its robust range of functions keeps you informed of your Wrangler's speed, rpm, real-time fuel economy, and overall average fuel economy in a colour-coded LED eco-graph. Now you can survey your driving and make appropriate adjustments that can improve your litres per kilometre. The Ecometer offers easy, no-tool installation to the dash for at-a-glance viewing.

### 9. UNDERHOOD LIGHT.

Handy light mounts to the underside of the hood and includes a 9.1-m retractable cord that features a magnetic end.

<sup>(1)</sup>Check provincial and local regulations for installation and use.



## TECH THAT CONNECTS.

### 1. MEDIA CENTRE 430N (RHB).<sup>(3)</sup>

Find your way to great music and fun places. The AM/FM/CD/DVD/Navigation radio with MP3/WMA support, 28GB digital hard drive, 6.5-inch touch screen, audio input jack, iPod® control, Voice Command,<sup>(3)</sup> Garmin GPS Navigation,<sup>(4)</sup> SIRIUS® Satellite Radio,<sup>(2)</sup> and voice-directed street navigation.

### 2. MEDIA CENTRE 230 (REQ).

AM/FM radio with six-CD/DVD player, MP3/WMA support, audio input jack, and Voice Command.<sup>(3)</sup> Available with and without integrated SIRIUS Satellite Radio.<sup>(2)</sup>

### 3. MEDIA CENTRE 130 (RES).

AM/FM/CD radio with MP3/WMA support, audio input jack, and Voice Command.<sup>(3)</sup> Available with and without integrated SIRIUS Satellite Radio.<sup>(2)</sup>

### 4. KICKER® SOUND SYSTEMS.

KICKER speakers and upgrade packages have been designed specifically for your Jeep® vehicle, so you get automotive sound the way it was intended. And best of all, KICKER parts install easily: bolt them in and then plug them in. No cutting or soldering is required!

### 5. INTERFACE MODULE FOR iPod.

The FM-bounded system lets you listen to music through your vehicle's audio system. iPod music file navigation is maintained by the iPod click wheel.

### 6. GARMIN® NAVIGATION SYSTEMS.<sup>(4)</sup>

Ultra-thin navigator with nüRoute™ technology with trafficTrends™ and myTrends™. Automatic self-learning, with arrival time estimate. Features on the multi-touch dual-orientation 4.3-inch wide-screen glass display include lane assist with junction view, Bluetooth® wireless, FM lifetime traffic, preloaded street maps for North America, spoken street names, Where am I? locator, photo navigation, ecoRoute™, pedestrian navigation options, and hands-free calling capabilities.

### GARMIN nüvi® 3790T<sup>(1)(5)</sup> (shown).

Garmin's top-of-the-line system is an ultra-thin Bluetooth® wireless-based navigator with everything needed for convenient travel: speech recognition, nüRoute™ technology, 3D terrain view, lane assist with junction view, FM lifetime traffic, preloaded street maps for North America, spoken street names, Where am I? locator, plus photo navigation, ecoRoute™ and pedestrian navigation options, all on a wide-screen multi-touch glass display.

### 7. ELECTRONIC VEHICLE TRACKING SYSTEM (EVTS).

It's a fact: time is of the essence when it comes to stolen vehicle recovery. Mopar's Electronic Vehicle Tracking System (EVTS) works 24/7 with nationwide coverage to keep track of your vehicle. This GPS-enabled real-time tracking system includes a Theft Protection Warranty and is transferable. Optional upgrade plans provide Emergency Service Dispatch and OnCall on-board panic button. Features such as setting speed and distance parameters with text alerts, unlimited online tracking, and full concierge service are also offered.

### 8. UCONNECT™ PHONE.<sup>(6)</sup>

Talking on the phone while driving has never been more convenient or more responsible. Uconnect Phone is an in-vehicle, voice-activated communication system that allows you to talk on your Bluetooth compatible phone virtually hands-free.<sup>(6)</sup> Call contacts in your phone's address book<sup>(6)</sup> just by saying their name. Select radio stations, SIRIUS Satellite Radio<sup>(2)</sup> channels, and navigation<sup>(4)</sup> destinations using voice commands.

CHECK US OUT AT MOPAR.CA

<sup>(1)</sup>Never program while driving. GPS mapping may not be detailed in all areas or reflect current road regulations. Navigation function uses part of the 40GB capacity. <sup>(2)</sup>SIRIUS Satellite Radio services require subscriptions, sold separately after 12-month trial included with new vehicle purchase/lease. Subscriptions are governed by SIRIUS Customer Agreement at siriuscanada.ca. <sup>(3)</sup>Must use Bluetooth compatible phone. Driving while distracted can result in loss of vehicle control. Only use mobile phones and other devices, even with voice commands, when it is safe to do so. <sup>(4)</sup>Phone must support Bluetooth Phone Book Access Profile (PBAP). <sup>(5)</sup>Visit garmin.com for specific details on Lifetime Map updates and Traffic (LMT) coverage.